



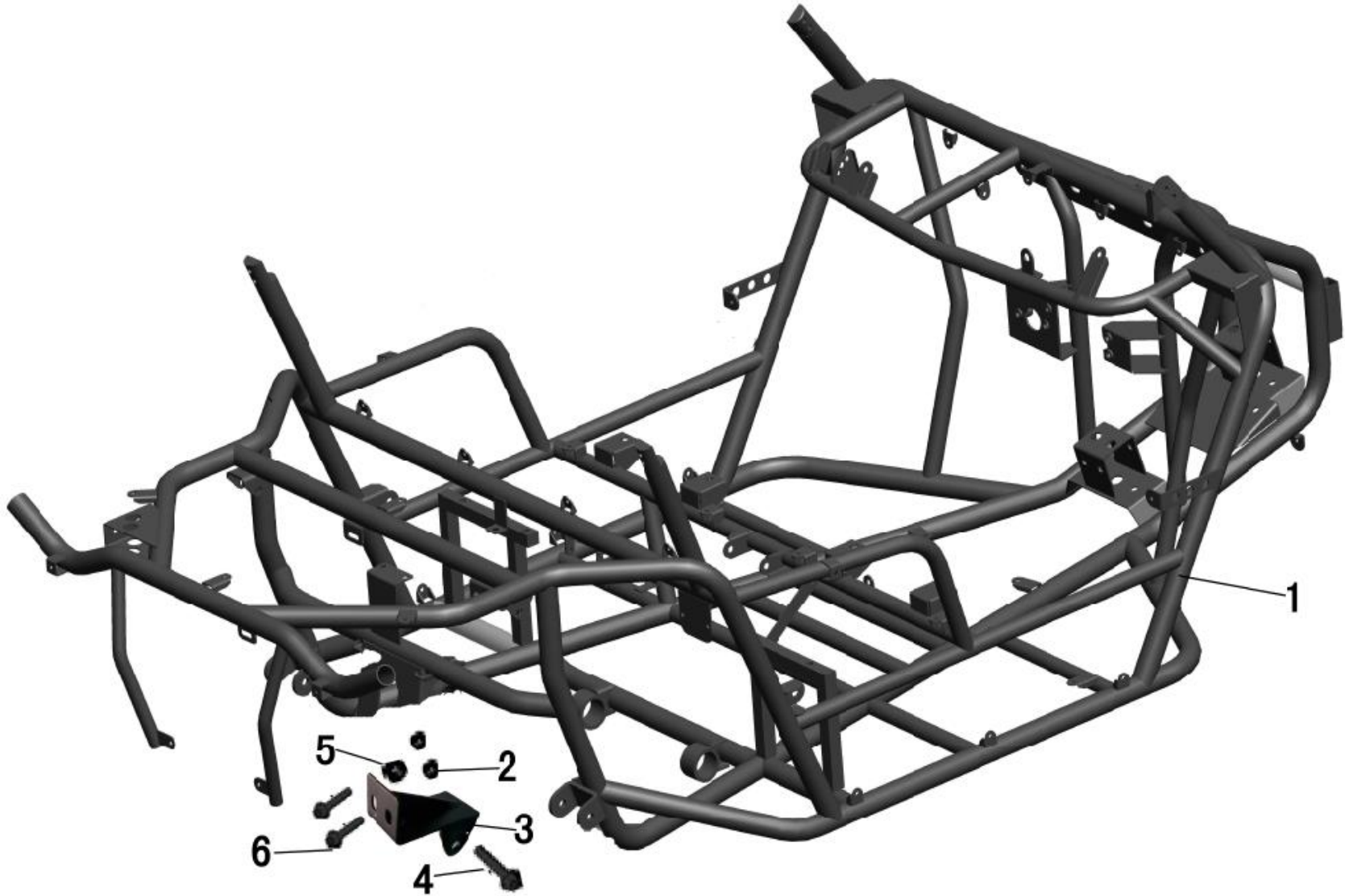
AP VENTURE

ENGINE PARTS CATALOG

XY200UE

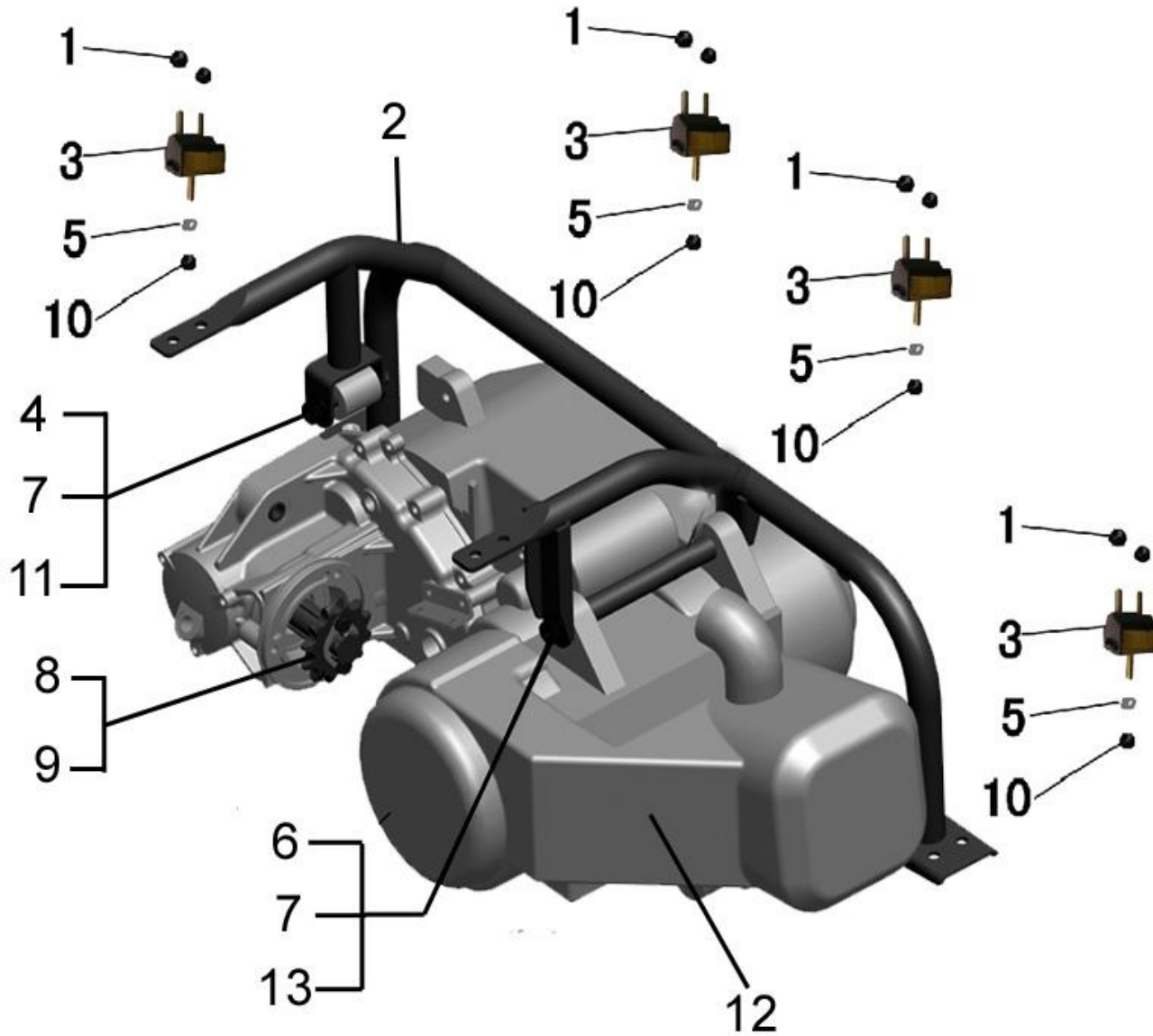


F01 车架 FRAME



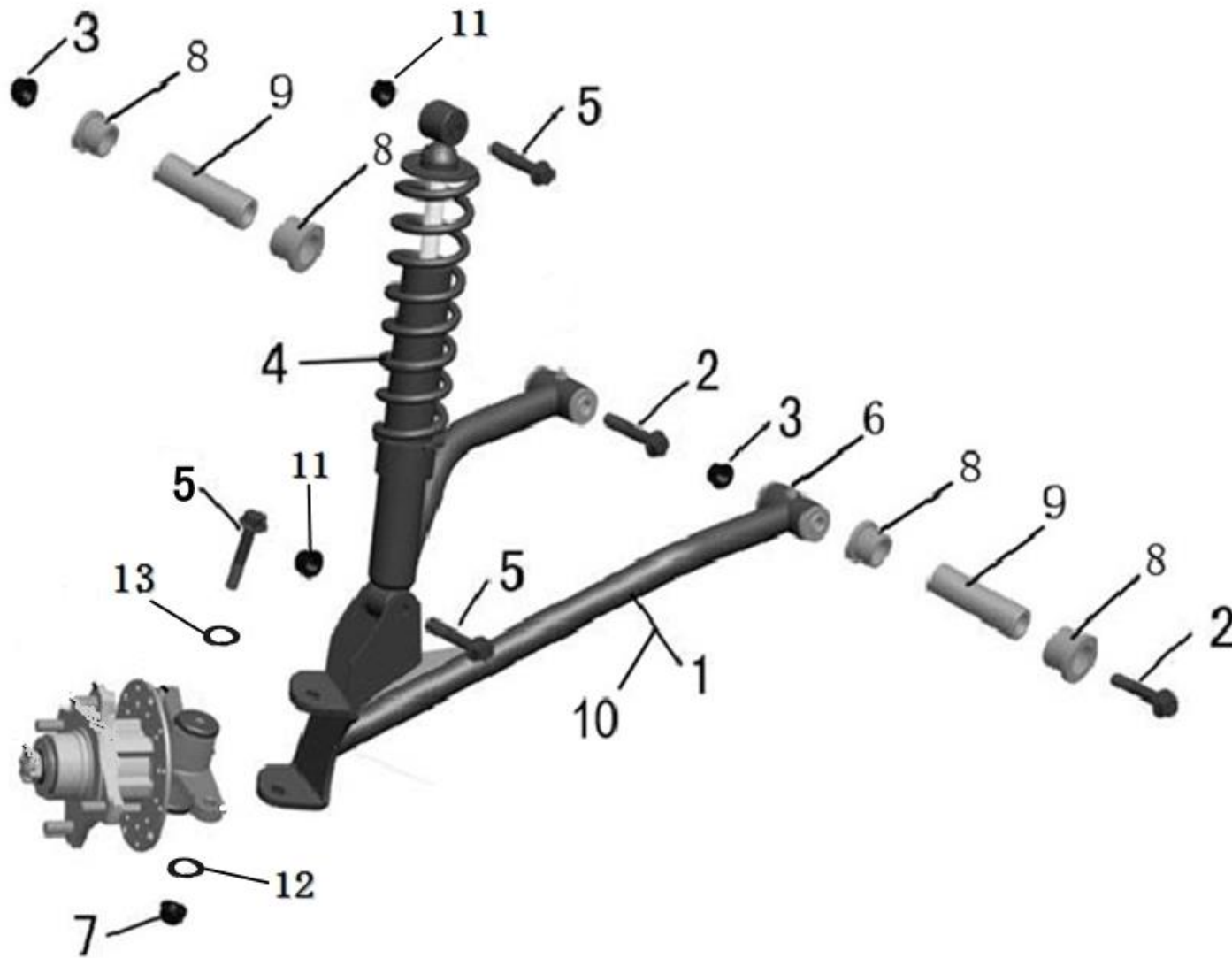
CODE	PART CODE	DESCRIPTION (EN)	DESCRIPTION (CN)	Q`TY	PRICE (\$)	REMARKS
1	L1201020	FRAME	主车架总成	1		
2	GB/T 6187.1 M8	NUT (M8)	六角自锁螺母 (M8)	6		
3	L1201030	BRACKET	转角支架	1		
4	GB/T 5789 M10×1.25×190	BOLT, FLANGE (M10×1.25×190)	六角法兰面螺栓 (M10×1.25×190)	2		
5	GB/T 6187.1 M10×1.25	BOLT (M10×1.25)	六角自锁螺母 (M10×1.25)	1		
6	GB/T 5789 M10×1.25×190	BOLT, FLANGE (M10×1.25×190)	六角法兰面螺栓 (M10×1.25×190)	1		
7						
8						
9						
10						
11						
12						
13						
14						
15						
16						
17						
18						
19						
20						
21						
22						
23						
24						

F02 发动机 ENGINE



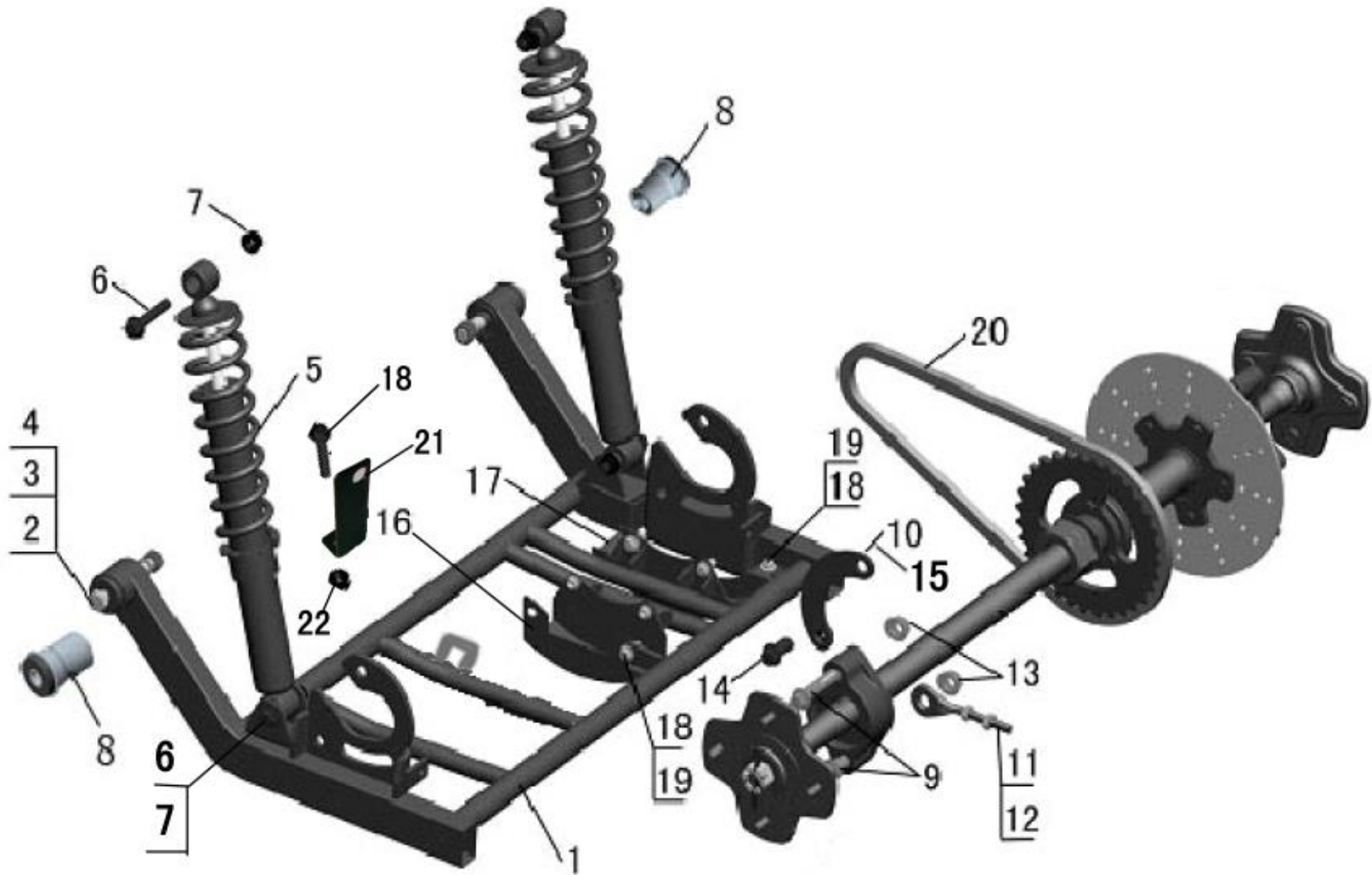
CODE	PART CODE	DESCRIPTION (EN)	DESCRIPTION (CN)	Q`TY	PRICE (\$)	REMARKS
1	GB/T 6187.1 M8	BOLT(M8)	六角自锁螺母(M8)	8		
2	L0103010	HANGER FRAME, ENGINE	发动机吊架	1		
3	A0104010	BUFFERING WASHER, ENGING	发动机缓冲胶垫	4		
4	GB/T 5789 M10×1.25×70	BOLT, FLANGE(M10×1.25×70)	六角法兰面螺栓(M10×1.25×70)	1		
5	GB/T 93 10	SPRING WASHER(φ10)	弹簧垫圈(φ10)	4		
6	GB/T 5789 M10×1.25×190	BOLT, FLANGE(M10×1.25×190)	六角法兰面螺栓(M10×1.25×190)	1		
7	GB/T 6187.1 M10×1.25	BOLTM10×1.25)	六角自锁螺母(M10×1.25)	2		
8	L0101010	DRIVE SPROCKET	主动链轮(12齿)	1		发动机自带
9	L0101011	LOCKING PLATE,SPROCKET(ATTACH FLANGE BOLT)	链轮锁片(配六角法兰面螺栓)	1		发动机自带
10	GB/T 6170 M10	NUT(M10)	六角螺母(M10)	4		
11	L0100210	ENGINE BUSHING (R)	发动机后衬套	1		
12	L0100010	ENGINE	发动机总成	1		
13	L0100200	ENGINE BUSHING	发动机衬套	1		
14						
15						
16						
17						
18						
19						
20						
21						
22						
23						
24						

F03 前悬挂总成 FRONT ARM



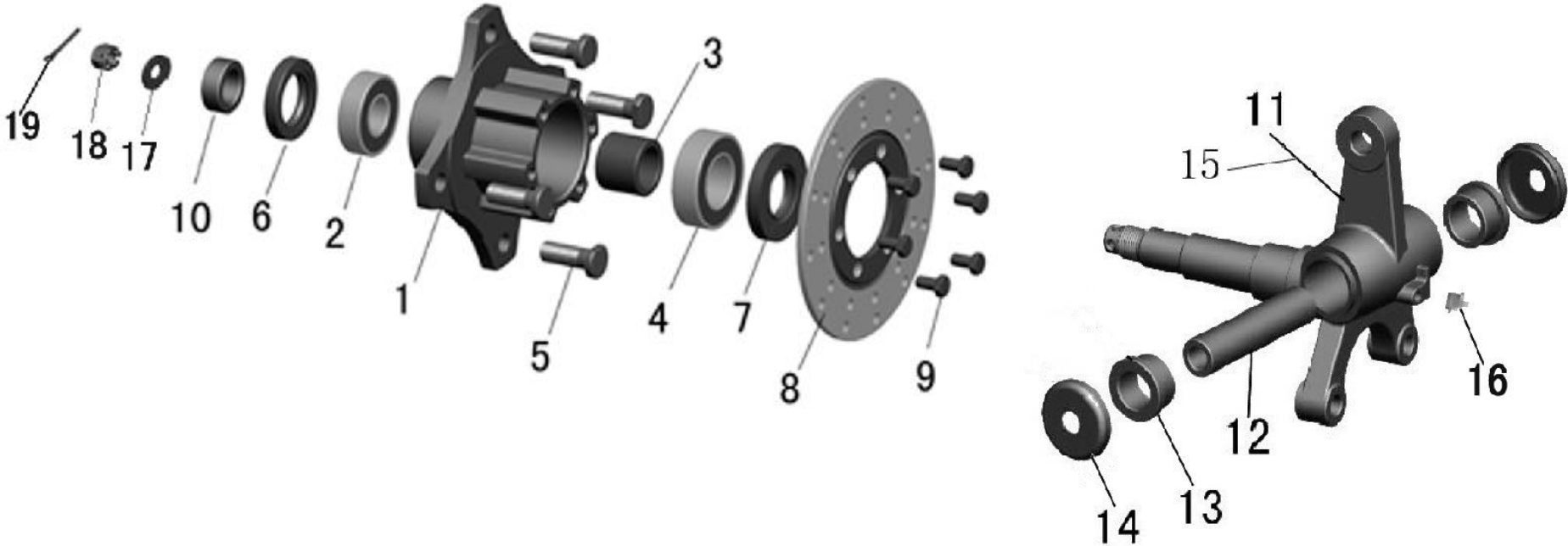
CODE	PART CODE	DESCRIPTION (EN)	DESCRIPTION (CN)	Q`TY	PRICE (\$)	REMARKS
1	L0505010	FRONT LEFT ARM	前摆臂总成(左)	1		
2	S0101321	BOLT, FLANGE (M10×1.25×80)	六角法兰面螺栓 (M10×1.25×80)	4		
3	S0203008	NUT, FLANGE (M10×1.25)	六角法兰面自锁螺母 (M10×1.25)	10		
4	L0501010	FRONT SHOCK ABSORBER	前减震	2		
5	GB/T 5789 M10×1.25×100	BOLT, FLANGE (M10×1.25×100)	六角法兰面螺栓 (M10×1.25×100)	6		
6	S0701002	GREASE NIPPLE (M6)	注油嘴 (M6)	4		
7	S0202073	NUT (M10×1.25)	六角螺母 (M10×1.25)	2		
8	G0505140	NYLON BUSHING (φ 17× φ 22×17.5)	摇臂尼龙套 (φ 17× φ 22×17.5)	8		借用500GK
9	G0505130	BUSHING, FR. LOWER SWING ARM (φ 10× φ 17×56.5)	前(后)下摆臂衬套 (φ 10× φ 17×56.5)	4		借用500GK
10	L0505020	FRONT RIGHT ARM	前摆臂总成(右)	1		
11	S0204005	NUT (M10×1.25)	六角锁紧螺母 (M10×1.25)	4		
12	S0402004	SPRING WASHER (φ 10)	弹簧垫圈 (φ 10)	2		
13	S0401903	WASHER (φ 5× φ 10×1)	平垫片 (φ 5× φ 10×1)	2		
14						
15						
16						
17						
18						
19						
20						
21						
22						
23						
24						

F04 后悬挂总成 REAR ARM



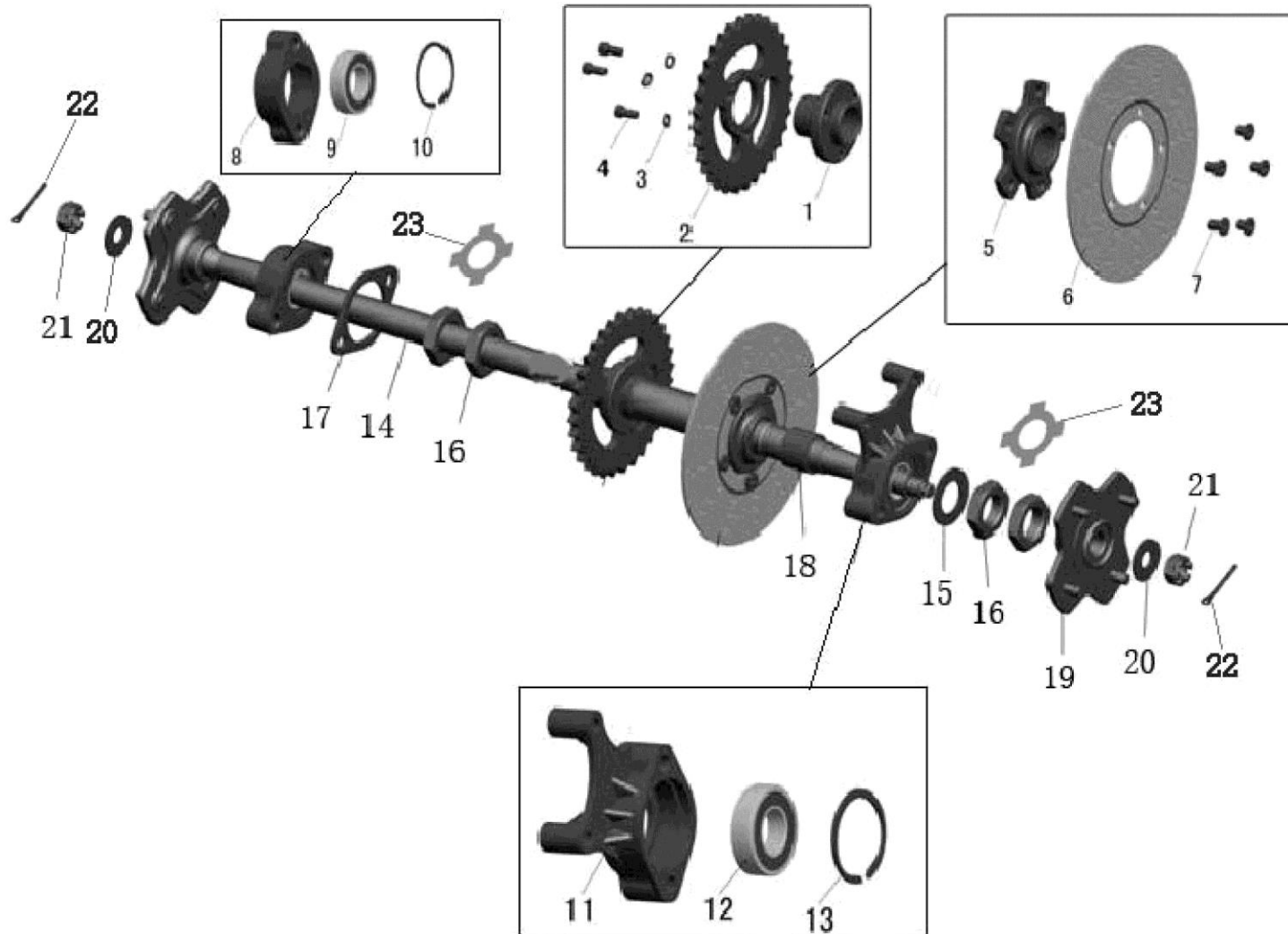
CODE	PART CODE	DESCRIPTION (EN)	DESCRIPTION (CN)	Q`TY	PRICE (\$)	REMARKS
1	L0506011	REAR ARM	后摆臂	1		
2	S0102523	BOLT (M12×1.75×90)	外六角螺栓 (M12×1.75×90)	2		
3	S0402005	SPRING WASHER (φ 12)	弹簧垫圈 (φ 12)	2		
4	S0202081	NUT (M12×1.75)	六角螺母 (M12×1.75)	2		
5	L0502010	REAR SHOCK ABSORBER	后减震	2		
6	S0101315	BOLT (M10×1.25×50)	六角法兰螺栓 (M10×1.25×50)	4		
7	S0203008	NUT (M10×1.25)	六角锁紧螺母 (M10×1.25)	4		
8	A0505070	BUFFERING RUBBER, ARM	摆臂缓冲胶套	2		借用500UTV
9	S0101613	BOLT, FLANGE (M12×1.25×60)	六角法兰面螺栓 (M12×1.25×60)	4		
10	L0506030	FIXING PLARE, PRINCIPAL AXIS (L)	主轴安装半圆板(左)	1		
11	L0504060	BOLT (M8×54)	调节螺栓 (M8×54)	2		
12	S0202005	NUT (M8)	六角螺母 (M8)	4		
13	S0203006	NUT, FLANGE (M12×1.25)	六角法兰面自锁螺母 (M12×1.25)	4		
14	S0101309	BOLT, FLANGE (M10×1.25×20)	六角法兰面螺栓 (M10×1.25×20)	2		
15	L0506040	FIXING PLARE, PRINCIPAL AXIS (R)	主轴安装半圆板(右)	1		
16	L0506020	GUARD, PRINCIPAL AXIS SPROCKET	主轴链轮保护底板	1		
17	L0803030	GUARD, BRAKE DISC	碟刹盘保护底板	1		
18	S0101291	BOLT, FLANGE (M8×20)	六角法兰面螺栓 (M8×20)	6		
19	S0203004	NUT (M8)	六角锁紧螺母 (M8)	6		
20	L0406062	CHAIN	链条	1		
21	L1012021	SUPPORT, SPEED SENSOR	速度传感器固定板	1		
22	GB/T 6187.1 M8	BOLT (M8)	六角自锁螺母 (M8)	2		
23						
24						

F05 前转向节总成 FRONT KNUCKLE



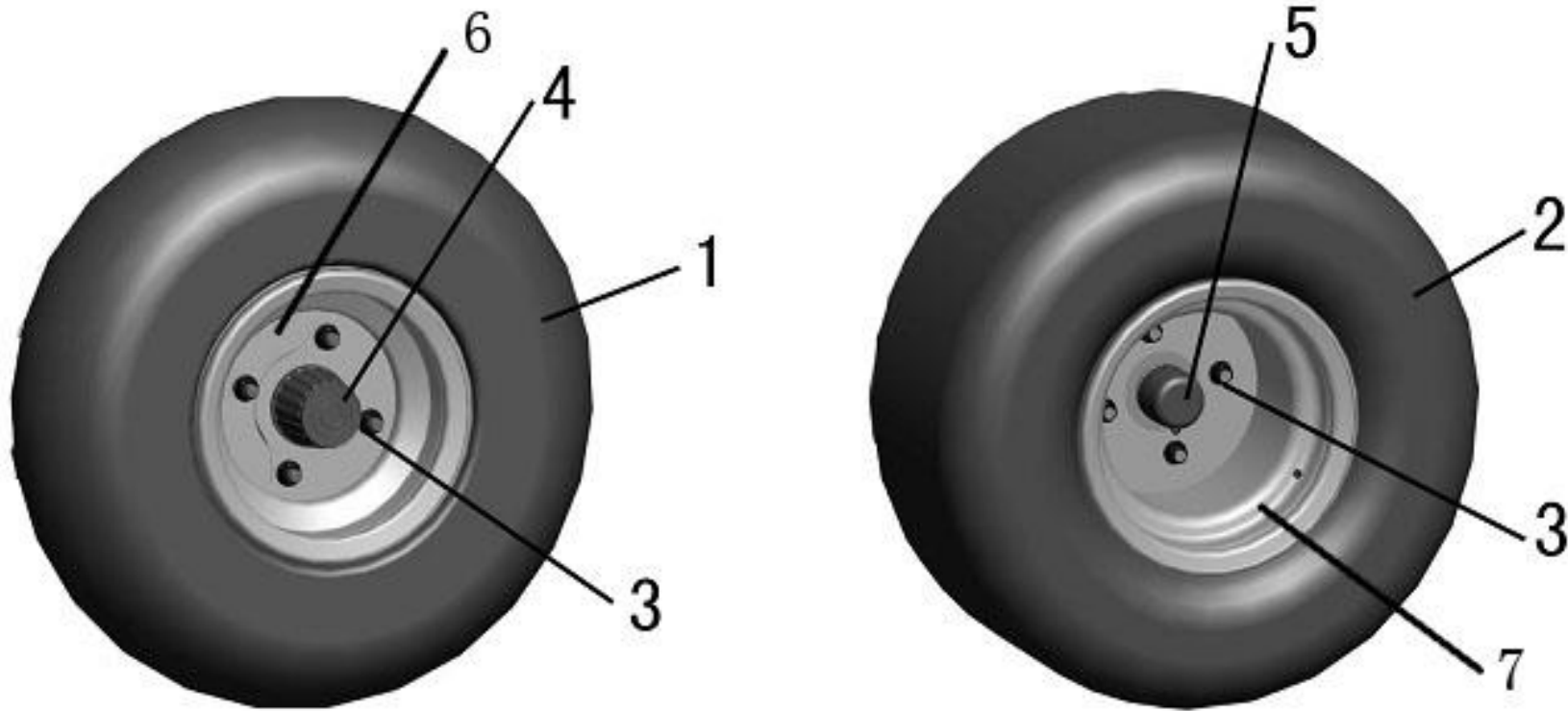
CODE	PART CODE	DESCRIPTION (EN)	DESCRIPTION (CN)	Q`TY	PRICE (\$)	REMARKS
1	L0504020	WHEEL HUB	轮毂座	2		
2	S0801017	BEARING (6203-RZ)	轴承 (6203-RZ)	2		
3	L0806040	BUSHING. WHEEL HUB (ϕ 30 \times ϕ 22 \times 25)	轮毂内衬套 (ϕ 30 \times ϕ 22 \times 25)	2		
4	S0801016	BEARING (6204-RZ)	轴承 (6204-RZ)	2		
5	L0504050	BOLT (M10 \times 1. 25 \times 27. 5)	滚花螺栓 (M10 \times 1. 25 \times 27. 5)	8		
6	L0504030	SEAL RING (TC26 \times 40 \times 7)	密封圈 (TC26 \times 40 \times 7)	2		
7	L0504040	SEAL RING (TC25 \times 47 \times 7)	密封圈 (TC25 \times 47 \times 7)	2		
8	L0803010	FRONT BRAKE DISC	前碟刹盘	2		
9	S0102058	BOLT (M6 \times 16)	六角螺栓 (M6 \times 16)	12		
10	L0806030	BUSHING (ϕ 17 \times ϕ 26 \times 10)	衬套 (ϕ 17 \times ϕ 26 \times 10)	2		
11	L0503010	FRONT Knuckle(L)	前转向节(左)	1		
12	L0503040	BUSHING (ϕ 16 \times ϕ 10. 2 \times 73. 5)	羊角衬套 (ϕ 16 \times ϕ 10. 2 \times 73. 5)	2		
13	L0503030	BUSHING (ϕ 16 \times ϕ 28 \times 20)	粉末冶金衬套 (ϕ 16 \times ϕ 28 \times 20)	4		
14	L0505040	DUST CAP	前转向节防尘盖	4		借用500GK
15	L0503020	FRONT KNUCKLE (R)	前转向节(右)	1		
16	S0701002	GREASE NIPPLE (M6)	注油嘴 (M6)	2		
17	S0401607	WASHER (ϕ 14 \times ϕ 28 \times 3)	平垫片 (ϕ 14 \times ϕ 28 \times 3)	2		
18	S0209102	NUT (M14 \times 1. 5)	开槽螺母 (M14 \times 1. 5)	2		
19	S0601007	PIN (ϕ 3 \times 35)	开口销 (ϕ 3 \times 35)	2		
20						
21						
22						
23						
24						

F06 后桥总成 REAR AXLE



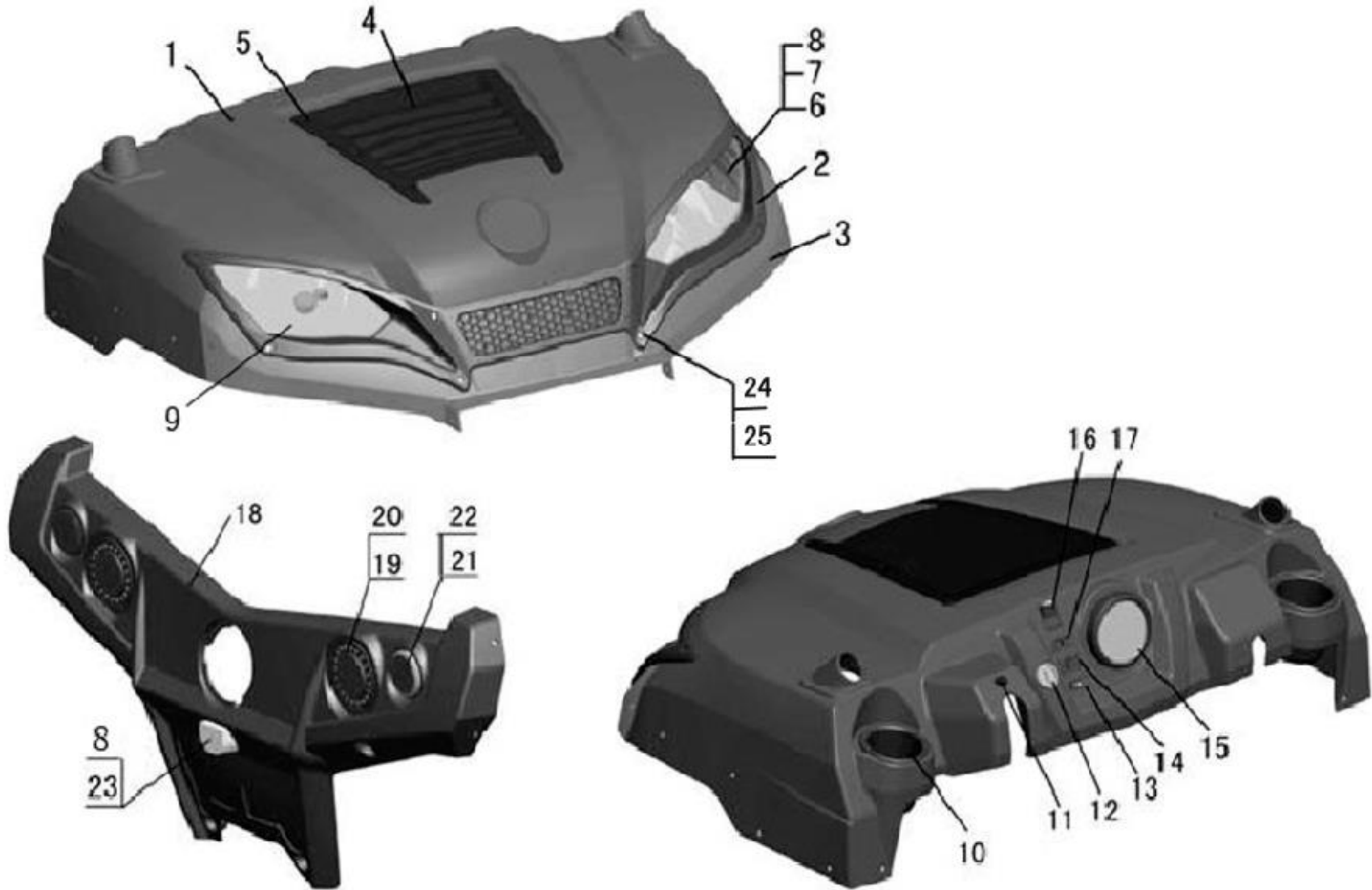
CODE	PART CODE	DESCRIPTION (EN)	DESCRIPTION (CN)	Q`TY	PRICE (\$)	REMARKS
1	L0404130	CHAIN TRAY BASE	链条盘座	1		
2	L0406050	PRINCIPAL AXIS SPROCKET	主轴链轮 (32齿)	1		
3	S0302004	SPRING WASHER (φ 8)	弹簧垫圈 (φ 8)	3		
4	S0103210	BOLT (M8×25)	内六角螺栓 (M8×25)	3		
5	L0404210	FIXING HOLDER, BRAKE DISC	刹车盘座	1		
6	L0803020	REAR BRAKE DISC	后碟刹盘	1		
7	L0504080	BOLT (M10×1.25×12)	特制内六角螺栓 (M10×1.25×12)	5		
8	L0404120	BEARING SEAT	轴承座	1		
9	S0801019	BEARING (62/32-RZ)	轴承 (62/32-RZ)	1		
10	S0303001	CIRCLIP (φ 62)	孔用弹性挡圈 (φ 62)	1		
11	L0404110	BEARING SEAT, BRAKE MASTER CYLINDER	刹车钳轴承座	1		
12	S0801018	BEARING (6206-RZ)	轴承 (6206-RZ)	1		
13	S0303012	CIRCLIP (φ 65)	孔用弹性挡圈 (φ 65)	1		
14	L0404020	PRINCIPAL AXIS	主轴	1		
15	L0406020	WASHER A (φ 42× φ 35.5×3)	垫圈 A (φ 42× φ 35.5×3)	2		
16	S0203130	NUT (M32×1.5)	六角螺母 (M32×1.5)	4		
17	L0404220	PLATE, PRINCIPAL AXIS	主轴安装板	1		
18	L0403010	REAR AXIS BUSHING	后轴衬套	1		
19	L0504010	WHEEL HUB FLANGE	轮毂法兰	2		
20	L0405005	WASHER (φ 43× φ 18×3)	半轴垫片 (φ 43× φ 18×3)	2		
21	GB/T 6178 M18×1.5	NUT (M18×1.5)	开槽螺母 (M18×1.5)	2		
22	S0601005	PIN (φ 4×30)	开口销 (φ 4×30)	2		
23	L0404230	WASHER	螺纹锁止垫片	2		
24						

F07 轮胎总成 WHEEL ASSEMBLY



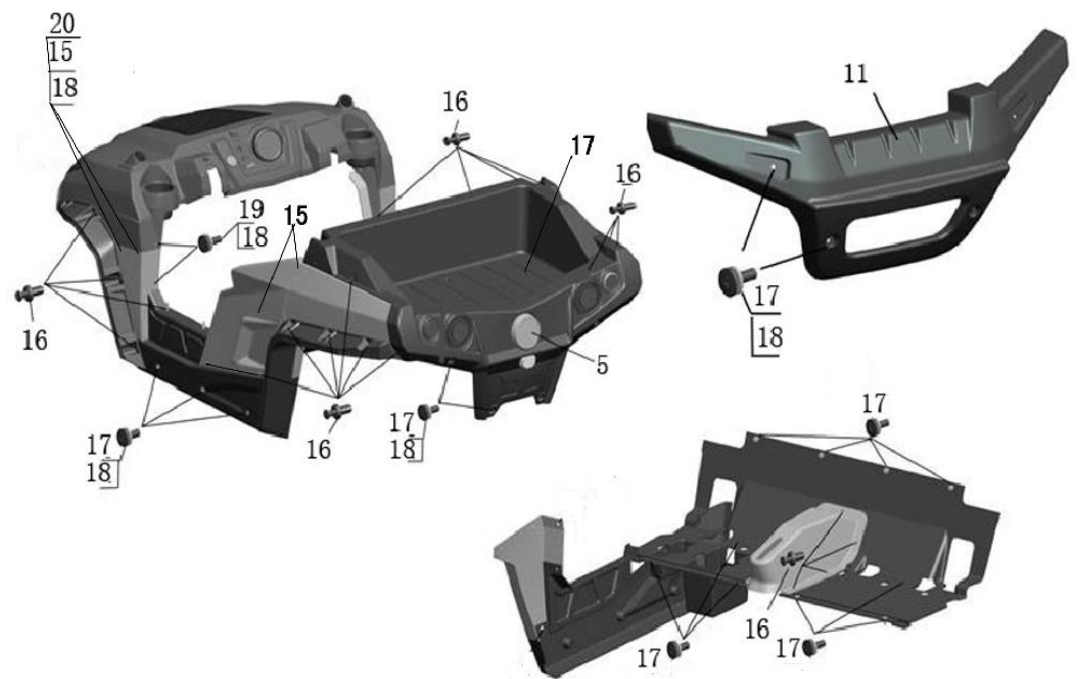
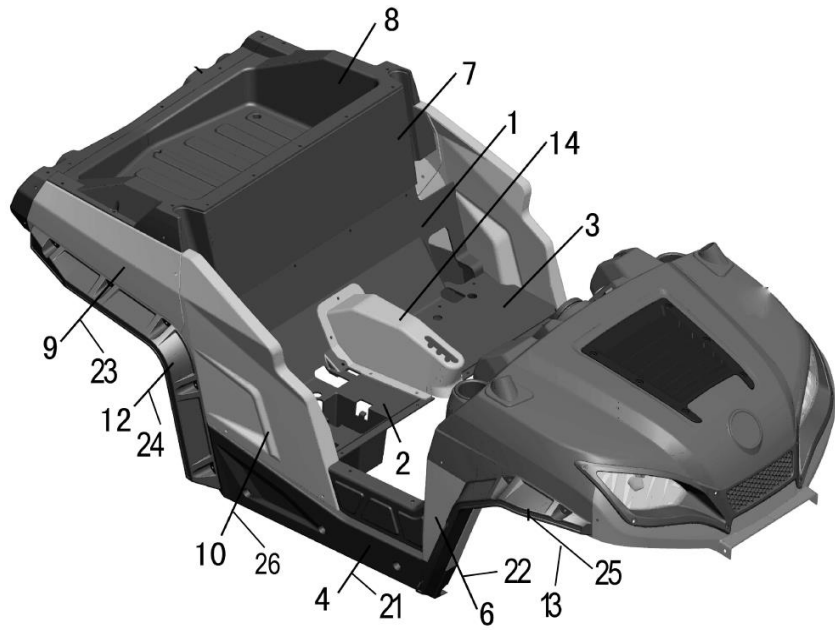
CODE	PART CODE	DESCRIPTION (EN)	DESCRIPTION (CN)	Q`TY	PRICE (\$)	REMARKS
1	L0601010	FRONT WHEEL ASSEMBLY	前轮胎(19×7-8)	2		
2	L0601020	REAR WHEEL ASSEMBLY	后轮胎(20×10-10)	2		
3	S0204005	NUT (M10×1.25)	六角锁紧螺母 (M10×1.25)	16		
4	L0602030	STEEL RIM CAP	轮毂防尘套	2		
5	A0602060	RUBBER RIM CAP	轮毂防尘盖(橡胶)	2		借用500UTV
6	L0602010	FRONT RIM	前轮辋(铁)	2		
7	L0602020	REAR RIM	后轮辋(铁)	2		
8						
9						
10						
11						
12						
13						
14						
15						
16						
17						
18						
19						
20						
21						
22						
23						
24						

F08 塑料件 I PLASTIC I



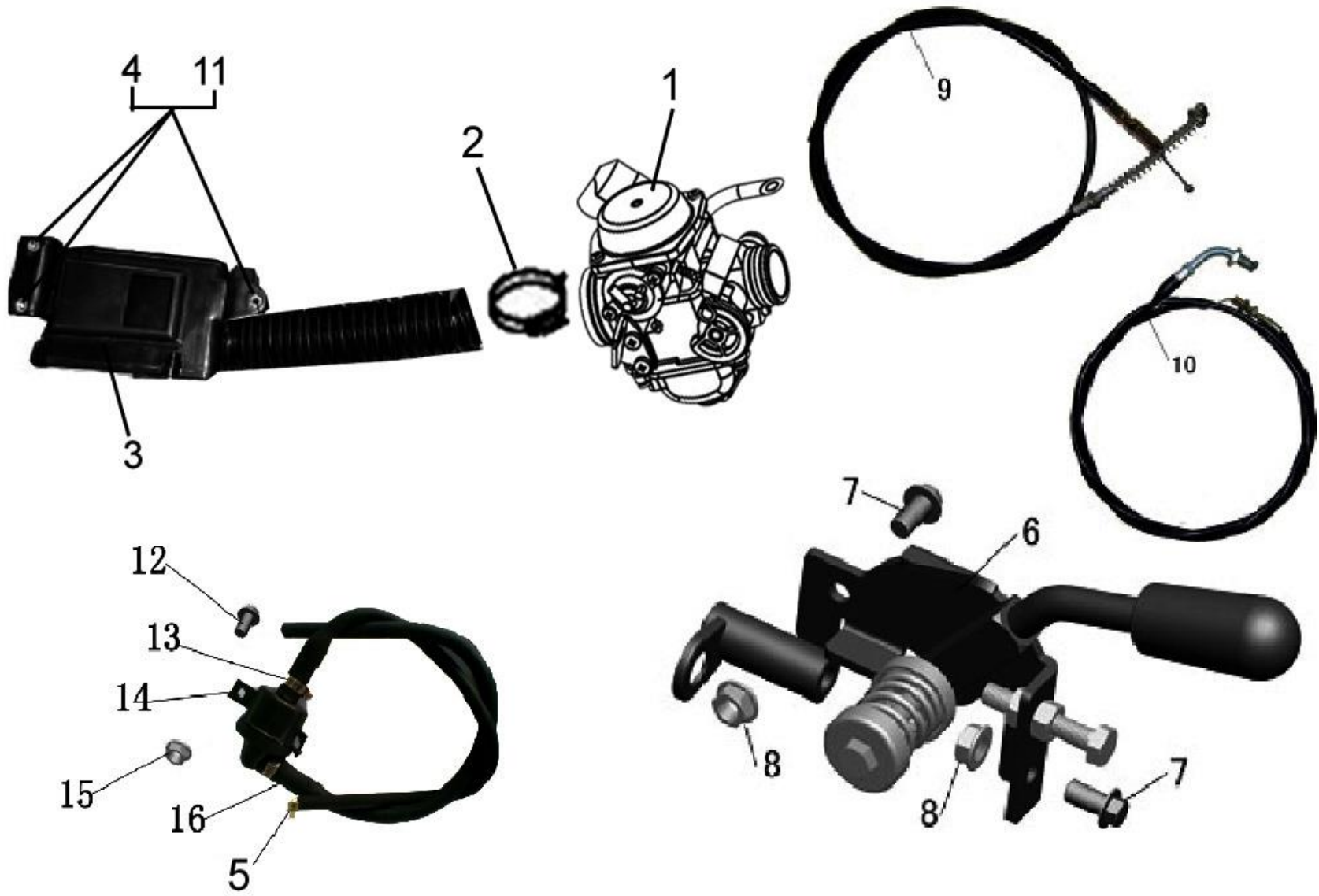
CODE	PART CODE	DESCRIPTION (EN)	DESCRIPTION (CN)	Q`TY	PRICE (\$)	REMARKS
1	L1101010	FRONT ENGINE COVER	前机盖	1		
2	L1101030	HEADLIGHT COVER	大灯外罩	1		
3	L1101110	UNDER COBER, FRONT ENGINE COVER	前机盖下外罩	1		
4	L1101020	GARNISH COVER, FRONT ENGINE COVER	前机盖装饰罩	1		
5	S0108001	EXPANSION SCREW (M8×20)	塑料膨胀螺丝 (M8×20)	6		
6	L1008020	HEADLIGHT ASSEMBLY (L)	前大灯(左)	1		
7	S0401002	WASHER (φ5×φ10×1)	平垫片 (φ5×φ10×1)	8		
8	GB/T 845 ST4.8×16	SCREW, TAP (ST4.8×16)	十字槽盘头自攻螺钉 (ST4.8×16)	12		
9	L1008030	HEADLIGHT ASSEMBLY (R)	前大灯(右)	1		
10	L1105010	CUP COVER	茶杯外罩	2		
11	A1005060	CAUTION SWITCH	警示开关	1		
12	G1005050	IGNITION SWITCH	点火开关总成	1		
13	L1005030	SWITCH	喇叭开关	1		
14	L1005010	TURNING LIGHT SWITCH	转向灯开关	1		
15	L1013020	METER ASSEMBLY	仪表	1		
16	L1005020	CHANGE LIGHT SWITCH	变光开关	1		
17	L1005040	LAMPLIGHT SWITCH	灯光开关	1		
18	L1216070	TAILLIGHT COVER	后尾灯外罩	1		
19	L1008010	TAILLIGHT ASSEMBLY	后尾灯SH100	2		
20	S0202003	NUT (M5)	六角螺母 (M5)	6		
21	A1008140	REAR REFLECTOR (RED)	反光片 (红色)	2		
22	S0202004	NUT (M6)	六角螺母 (M6)	2		
23	H1008130	LICENSE PLATE LIGHT	牌照灯组件	1		
24	GB/T 819.1 M6×16	BOLT (M6×16)	十字大扁头螺栓 (M6×16)	12		
25	S0204002	NUT (M10×1.25)	六角锁紧螺母 (M6)	12		

F09 塑料件 II PLASTIC II



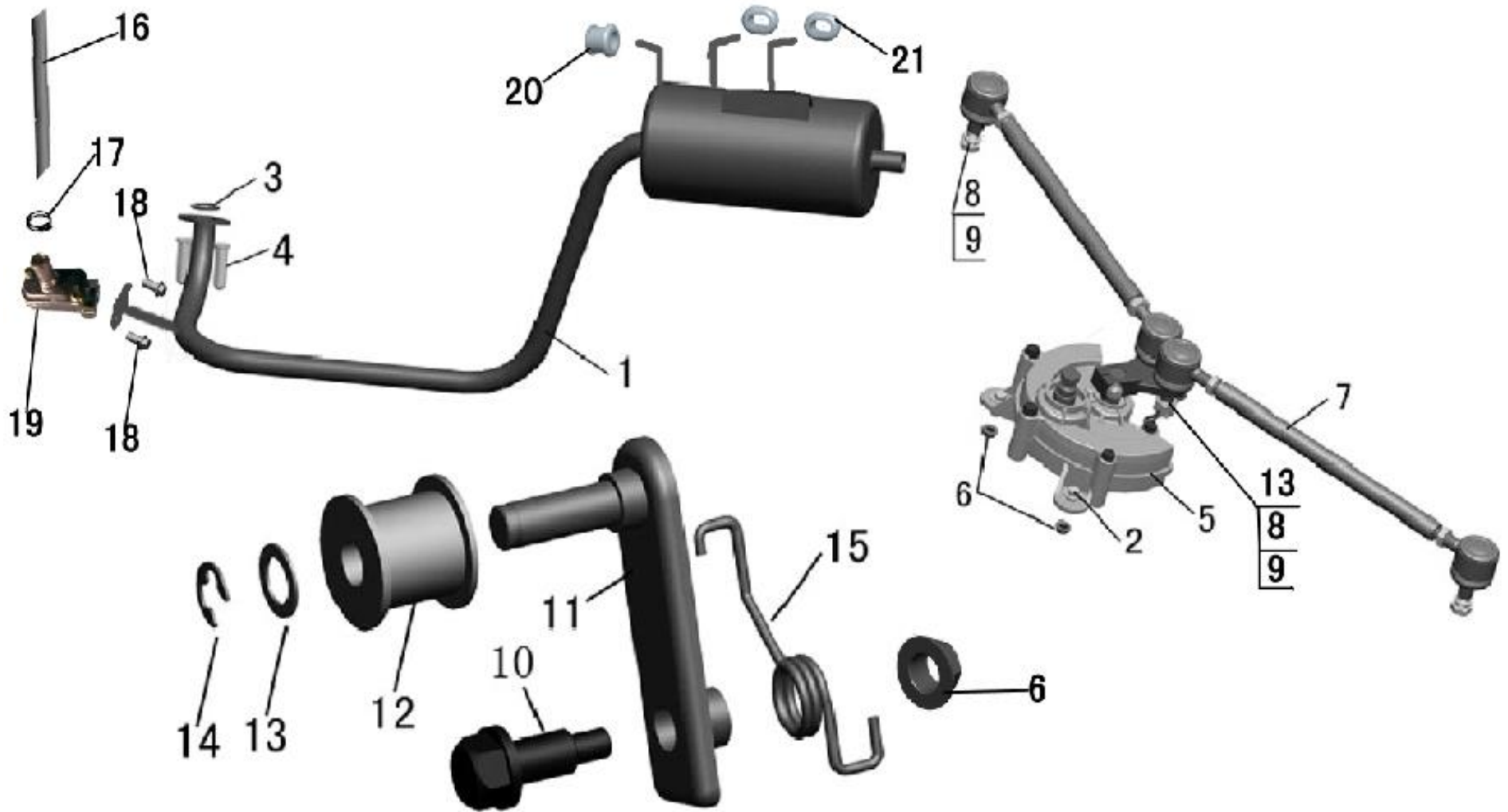
CODE	PART CODE	DESCRIPTION (EN)	DESCRIPTION (CN)	Q`TY	PRICE (\$)	REMARKS
1	L1212100	REAR COVER, SEAT	座椅后外罩	1		
2	L1207020	BATTDRY COVER	座椅下电瓶盒罩	1		
3	L1207010	SEAT COVER (UNDER)	座椅下外罩	1		
4	L1216040	SIDE COVER (L)	侧挡外罩 (左)	1		
5	L1216110	COVER, GASOLINE TANK MEATUS	油箱口外罩	1		
6	L1101120	CONNECT COVER, ENGINE COVER (L)	机盖连接罩 (左)	1		
7	L1212090	SEAT REAR COVER (UPPER)	座椅后上外罩	1		
8	L1216080	COVER, CARGO BOX	货箱外罩	1		
9	L1216090	SIDE COVER, GARGO BOX (L)	货箱侧板 (左)	1		
10	L1216010	SIDE ABOVE COVER (L)	侧挡上外罩 (左)	1		
11	L1203040	BUMPER DECORATE COVER	前保险杠外罩	1		
12	L1208010	REAR TYRE COVER (L)	后轮眉 (左)	1		
13	L1103010	FRONT TYRE COVER (L)	前轮眉 (左)	1		
14	L0303041	GEAR SHIFTING COVER	挂档外罩	1		
15	S0106108	BOLT (M6×16)	十字大扁头螺栓 (M6×16)	12		
16	S0108001	EXPANSION SCREW (M8×20)	塑料膨胀螺丝 (M8×20)	52		
17	S0106109	BOLT (M6×20)	十字大扁头螺栓 (M6×20)	24		
18	S0404001	RUBBER WASHER (φ6)	橡胶垫 (φ6)	24		
19	S0106111	BOLT (M6×30)	十字大扁头螺栓 (M6×30)	4		
20	S0204002	NUT (M10×1.25)	六角锁紧螺母 (M6)	22		
21	L1216050	SIDE COVER (R)	侧挡外罩 (右)	1		
22	L1101130	CONNECT COVER, ENGINE COVER (R)	机盖连接罩 (右)	1		
23	L1216100	SIDE COVER, GARGO BOX (R)	货箱侧板 (右)	1		
24	L1208020	REAR TYRE COVER (R)	后轮眉 (右)	1		
25	L1103020	FRONT TYRE COVER (R)	前轮眉 (右)	1		
26	L1216020	SIDE ABOVE COVER (R)	侧挡上外罩 (右)	1		

F10 空濾器 手剎 AIRFILTER、HAND BRAKE ASSEMBLY



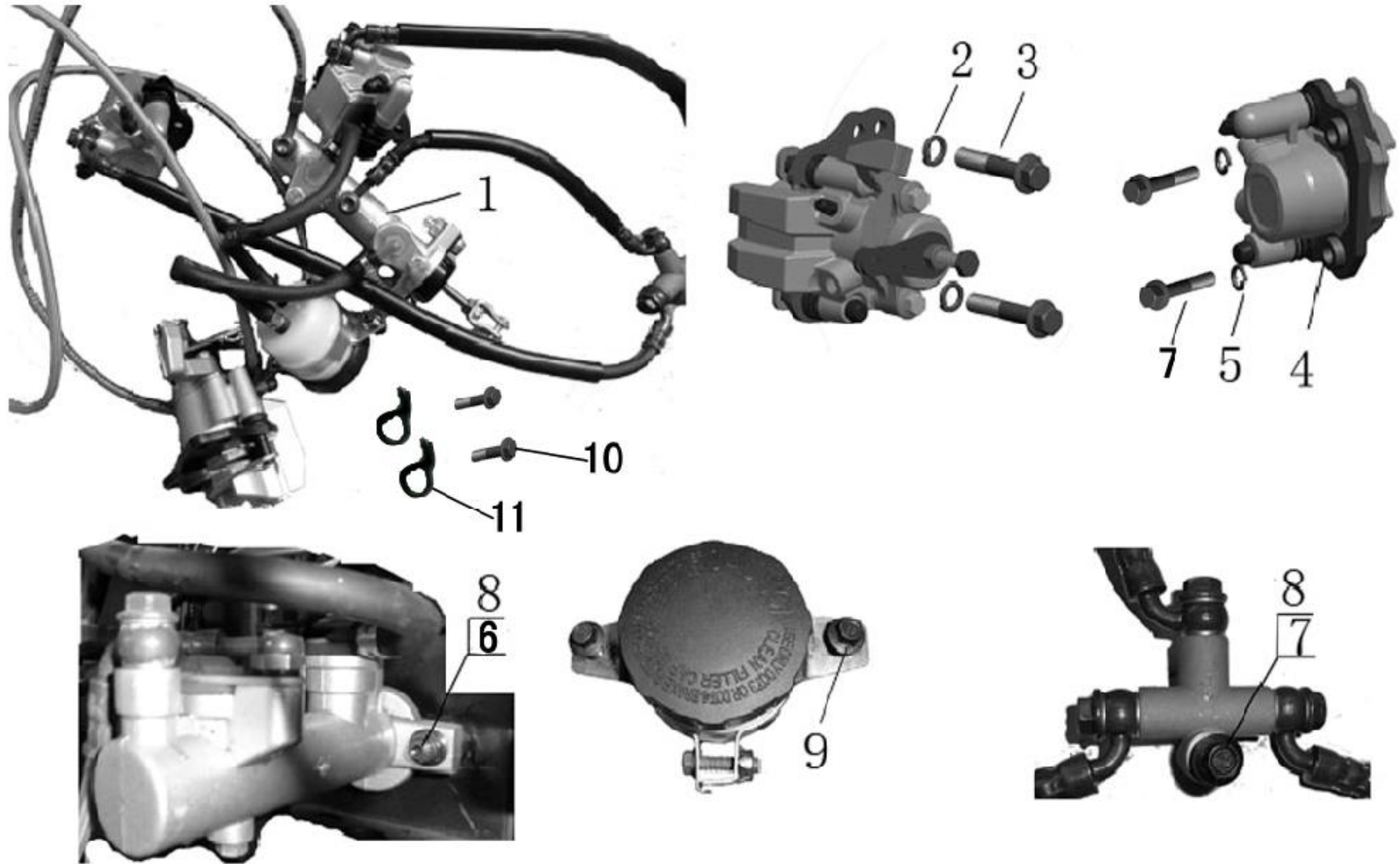
CODE	PART CODE	DESCRIPTION (EN)	DESCRIPTION (CN)	Q`TY	PRICE (\$)	REMARKS
1	L0102020	CARBURETOR	化油器	1		
2	S0301005	CLAMP (ϕ 25- ϕ 38)	抱箍 (ϕ 25- ϕ 38)	1		
3	L0105020	AIR FILTER	空滤器	1		
4	S0101057	BOLT, FLANGE (M6 \times 20)	六角法兰面螺栓 (M6 \times 20)	3		
5	S0302112	CLAMP (ϕ 10)	卡箍 (ϕ 10)	1		
6	L0810020	HAND BRAKE ASSEMBLY	手刹器总成	1		
7	S0101291	BOLT, FLANGE (M8 \times 20)	六角法兰面螺栓 (M8 \times 20)	2		
8	S0203004	NUT (M8)	六角自锁螺母 (M8)	2		
9	L0810010	HAND BRAKE CABLE	手刹拉索	1		
10	L0109020	THROTTLE CABLE	油门拉索	1		
11	S0204002	NUT (M10 \times 1. 25)	六角锁紧螺母 (M6)	3		
12	GB/T 5789 M6 \times 30	BOLT, FLANGE (M6 \times 30)	六角法兰面螺栓 (M6 \times 30)	1		
13	S0301003	CLAMP (ϕ 13- ϕ 19)	抱箍 (ϕ 13- ϕ 19)	2		
14	L0105500	AIR CLEANER, SUPPLY	二次补气空滤器	1		
15	GB/T 6177. 1 M6	NUT (M6)	六角锁紧螺母 (M6)	1		
16	L0105510	RUBBER HOSE	二次补气空滤器橡胶管	2		
17						
18						
19						
20						
21						
22						
23						
24						

F11 消声器、转向机、张紧轮 MUFFLER、STEERING ASSEMBLY、TENSIONING PULLEY ASSEMBLY



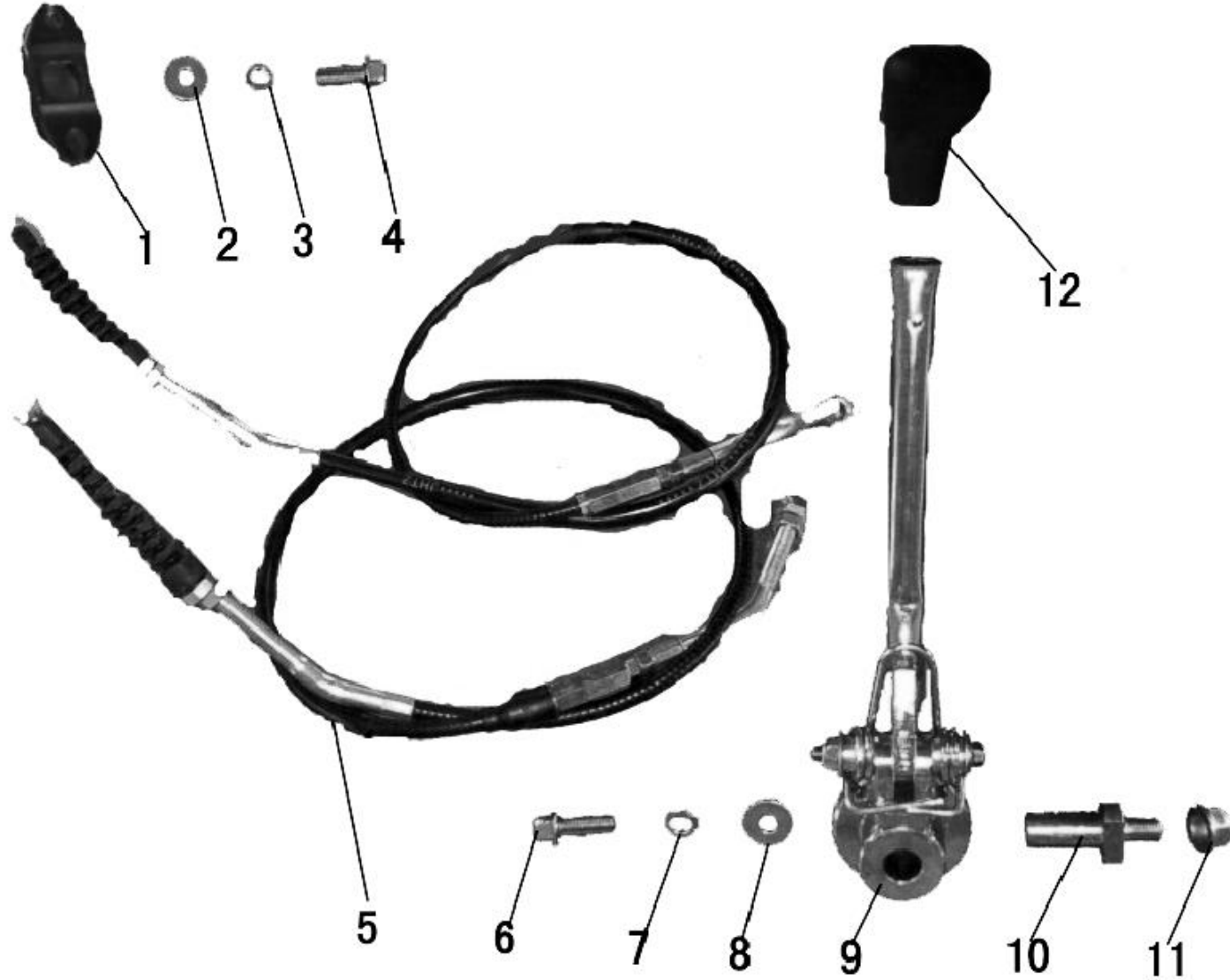
CODE	PART CODE	DESCRIPTION (EN)	DESCRIPTION (CN)	Q`TY	PRICE (\$)	REMARKS
1	L0107020	MUFFLER	排气消声器总成	1		
2	S0101291	BOLT, FLANGE (M8×20)	六角法兰面螺栓 (M8×20)	5		
3	L0107500	EXHAUST PIPE WASHER	排气管垫	1		发动机自带
4	L0101506	NUT (M8)	排气管螺母 (M8)	2		发动机自带
5	L0901010	STEERING ASSEMBLY	转向机总成	1		
6	S0203004	NUT (M8)	自锁螺母 (M8)	4		
7	L0905020	TIE-ROD ASSEMBLY	横向拉杆组件	2		
8	S0209001	NUT (10×1.25)	开槽螺母 (10×1.25)	4		横向拉杆自带
9	S0601007	COTTER PIN (φ3×35)	开口销 (φ3×35)	4		
10	L0504070	BOLT (M8×33)	导轨螺栓 (M8×33)	1		
11	L0406010	BRACKET, TENSIONING PULLEY ASSEMBLY	张紧支架焊接组件	1		
12	L0406040	NYLON ORBIT	尼龙导轨	1		
13	S0401408	WASHER (φ10×φ21×1)	垫圈 (φ10×φ21×1)	1		
14	S0303501	"E" BEAD FLANGE (φ10)	E型挡圈 (φ10)	1		
15	L0406090	ORBIT SPRING	导轨弹簧	1		
16	F0404040	RUBBER HOSE	回油橡胶管	1		
17	S0301003	CLAMP (φ13-φ19)	抱箍 (φ13-φ19)	1		
18	GB/T 5789 M6×16	BOLT, FLANGE (M6×16)	六角法兰面螺栓 (M6×16)	2		
19	L0106300	VALVE , SUPPLY AIR	二次补气阀	1		
20	41634-2040	BUFFER BLOCK B	消声器固定缓冲块B	1		
21	41633-2040	BUFFER BLOCK A	消声器固定缓冲块A	2		
22						
23						
24						

F12 制动系统 BRAKE MASTER CYLINDER



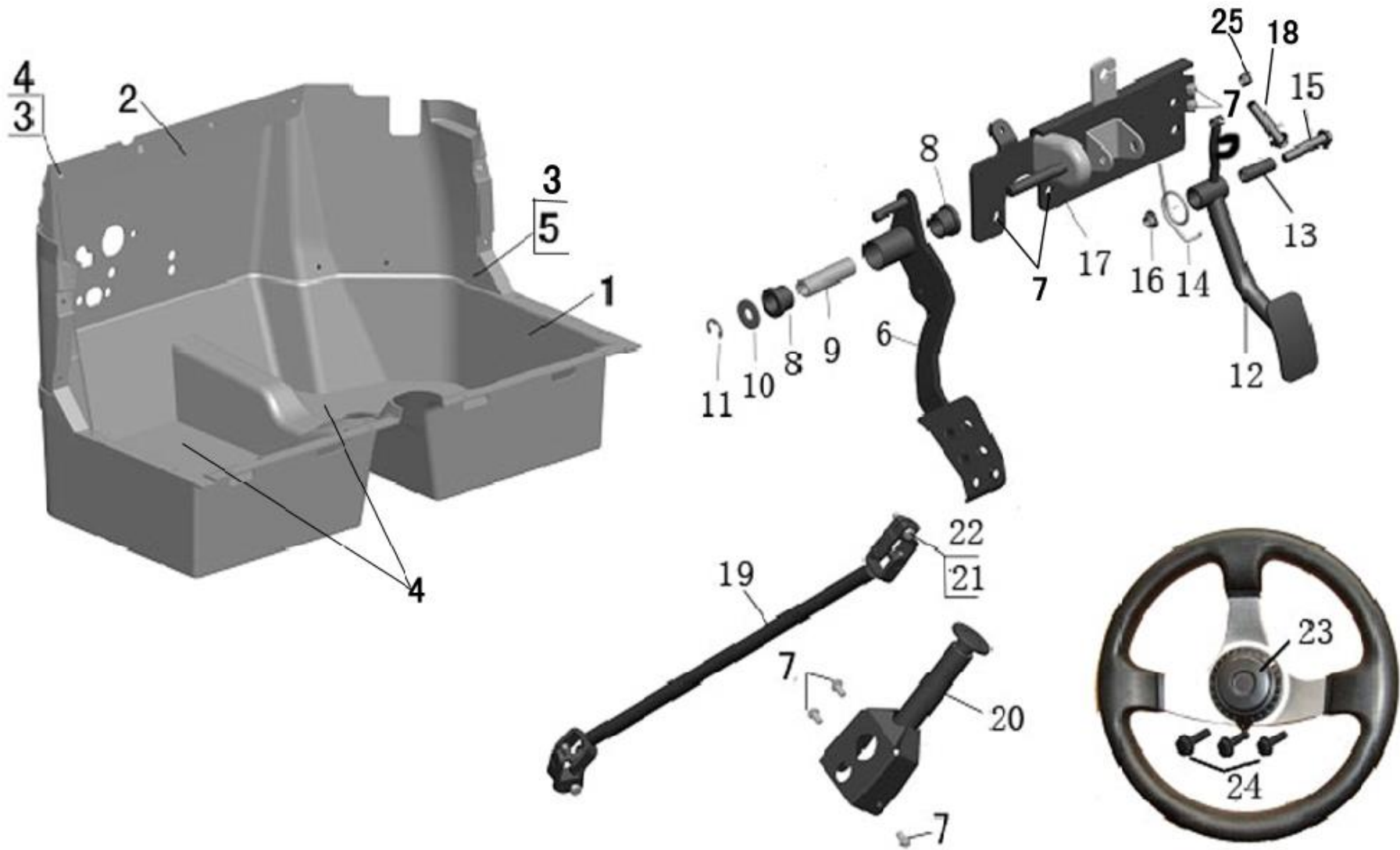
CODE	PART CODE	DESCRIPTION (EN)	DESCRIPTION (CN)	Q`TY	PRICE (\$)	REMARKS
1	L0801010	MASTER CYLINDER, PEDAL BRAKE	制动器总成(一拖三)	1		
2	GB/T 95 12	WASHER (ϕ 10 \times ϕ 20 \times 2)	平垫片 (ϕ 10 \times ϕ 20 \times 2)	2		
3	S0101314	BOLT (M10 \times 1. 25 \times 45)	六角法兰面螺栓 (M10 \times 1. 25 \times 45)	2		
4	L0801020	WASHER (ϕ 16 \times ϕ 9 \times 5)	前泵垫圈 (ϕ 16 \times ϕ 9 \times 5)	4		
5	S0402003	SPRING WASHER (ϕ 8)	弹簧垫圈 (ϕ 8)	4		
6	S0101213	BOLT, FLANGE (M8 \times 50)	六角法兰面螺栓 (M8 \times 50)	2		
7	S0101209	BOLT, FLANGE (M8 \times 30)	六角法兰面螺栓 (M8 \times 30)	5		
8	S0203004	NUT (M8 \times 1. 25)	六角自锁螺母 (M8 \times 1. 25)	3		
9	S0101056	BOLT, FLANGE (M6 \times 16)	六角法兰面螺栓 (M6 \times 16)	2		
10	GB/T 5789 M6 \times 12	BOLT, FLANGE (M6 \times 12)	六角法兰面螺栓 (M6 \times 12)	2		
11	G0801020	CLAMP	油管线夹	2		
12						
13						
14						
15						
16						
17						
18						
19						
20						
21						
22						
23						
24						

F13 换档系统 GEARSHIFT ASSEMBLY



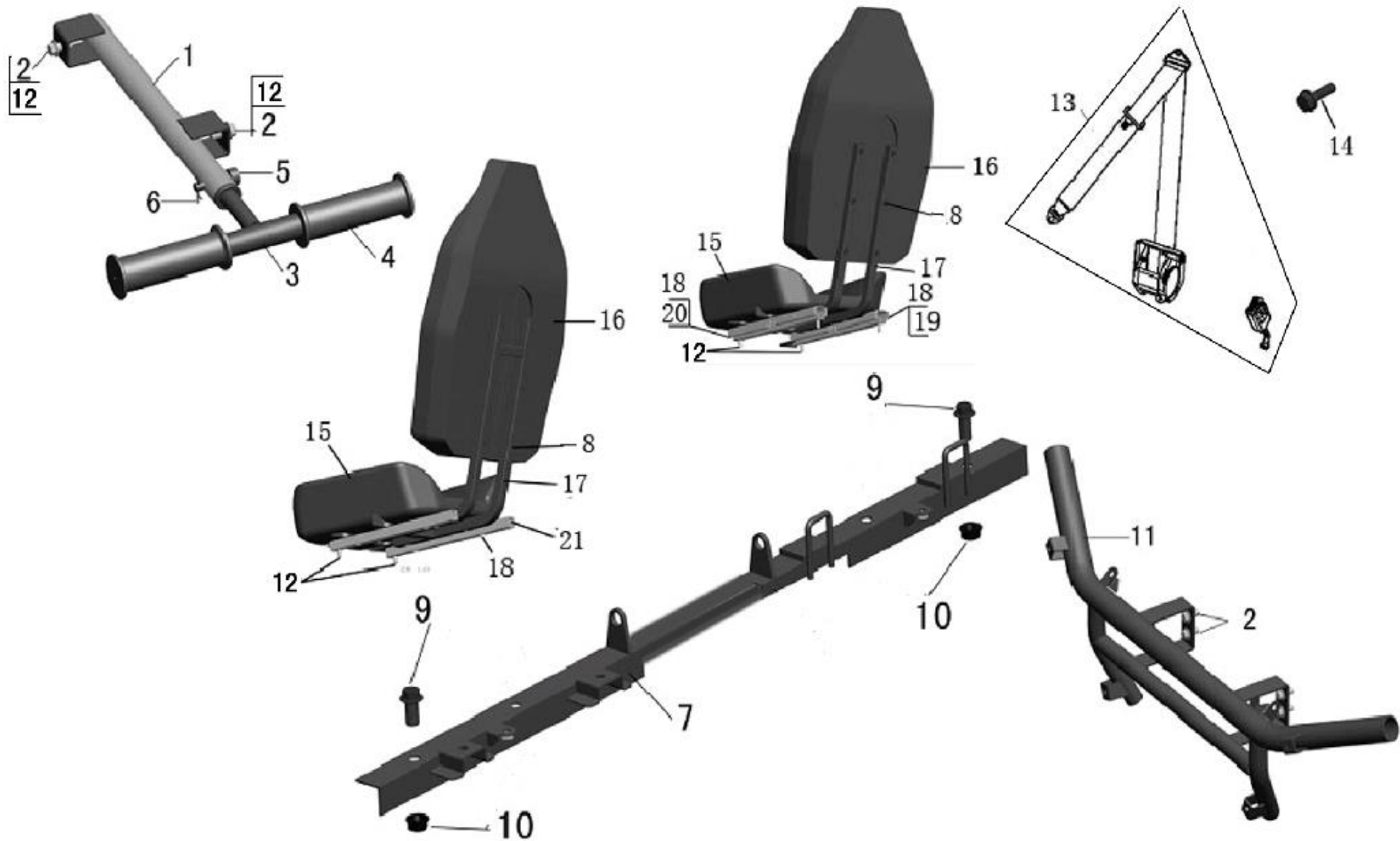
CODE	PART CODE	DESCRIPTION (EN)	DESCRIPTION (CN)	Q`TY	PRICE (\$)	REMARKS
1	L0101505	GEARSHIFT DRUM ASSEMBLY	变档鼓组件	1		
2	GB/T 95 6	WASHER ($\phi 6 \times \phi 20 \times 1.5$)	平垫片 ($\phi 6 \times \phi 20 \times 1.5$)	1		
3	GB/T 93 6	SPRING WASHER ($\phi 6$)	弹簧垫圈 ($\phi 6$)	1		
4	GB/T 5789 M6 \times 20	BOLT, FLANGE (M6 \times 20)	六角法兰面螺栓 (M6 \times 20)	1		
5	L0303120	GEAR SHTFT CABLE	换档拉索	2		
6	GB/T 5789 M8 \times 20	BOLT, FLANGE (M8 \times 20)	六角法兰面螺栓 (M8 \times 20)	1		
7	GB/T 93 8	SPRING WASHER ($\phi 8$)	弹簧垫圈 ($\phi 8$)	1		
8	GB/T 95 8	WASHER ($\phi 8 \times \phi 20 \times 1.5$)	平垫片 ($\phi 8 \times \phi 20 \times 1.5$)	1		
9	L0303050	GEARSHIFT ASSEMBLY	换档总成	1		
10	L0303300	PIVOT PIN, GEARSHIFT	换档轴销	1		
11	GB/T 6187.1 M10 \times 1.25	BOLT (M10 \times 1.25)	六角自锁螺母 (M10 \times 1.25)	1		
12	L0303041	GLOBE JOINT, GEARSHIFT	挂档球头	1		
13						
14						
15						
16						
17						
18						
19						
20						
21						
22						
23						
24						

F14 底板、方向机总成 MOTHERBOARD、STEERING ASSEMBLY



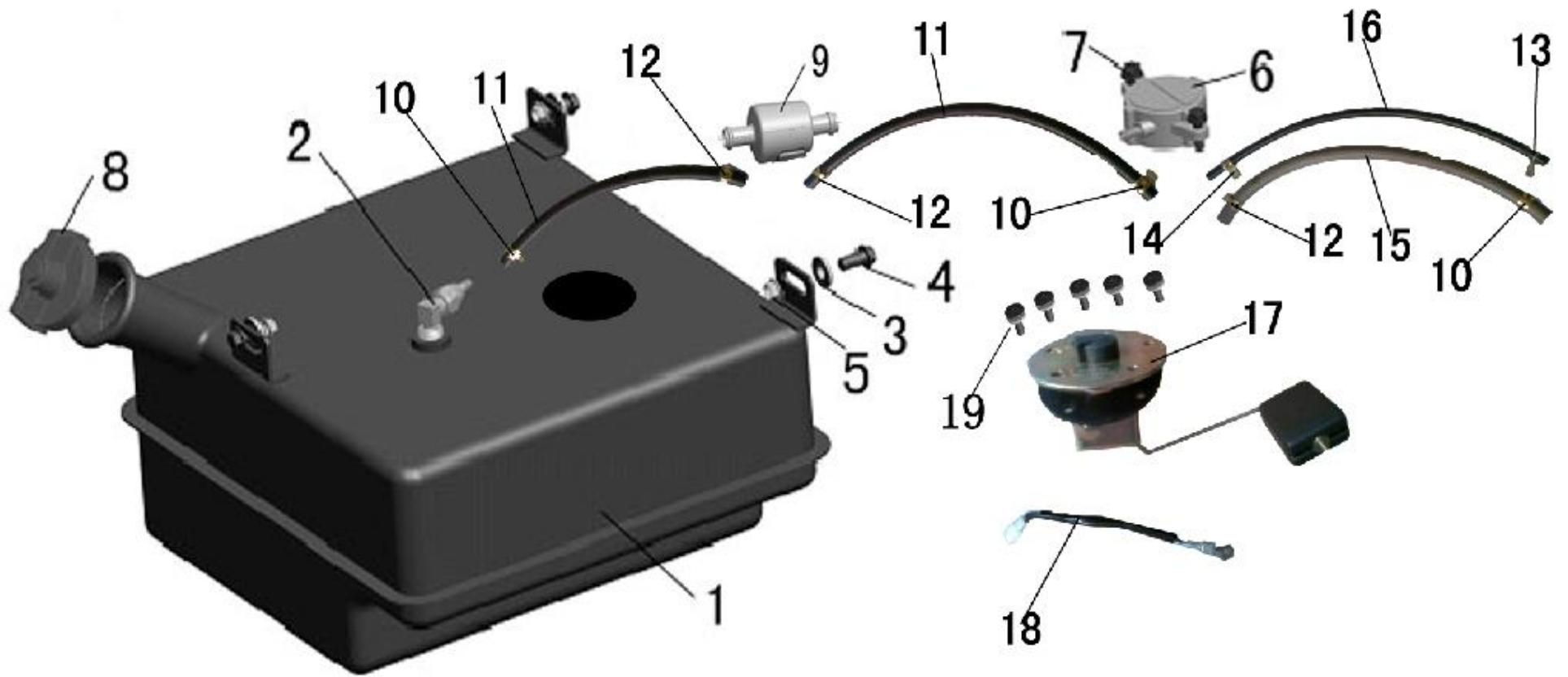
CODE	PART CODE	DESCRIPTION (EN)	DESCRIPTION (CN)	Q`TY	PRICE (\$)	REMARKS
1	L1207030	MOTHERBOARD COVER	底板外罩	1		
2	L1216030	FRONT FENDER COVER	前挡外罩	1		
3	S0204002	NUT (M10×1.25)	六角锁紧螺母 (M6)	10		
4	S0106109	BOLT (M6×20)	十字大扁头螺栓 (M6×20)	8		
5	S0106108	BOLT (M6×16)	十字大扁头螺栓 (M6×16)	6		
6	L0806050	PEDAL, BRAKE	刹车踏板焊接组件	1		
7	S0101207	BOLT, FLANGE (M8×20)	六角法兰面螺栓 (M8×20)	7		
8	G0505140	NYLON BUSHING (φ 17× φ 22×17.5)	摇臂内尼龙套 (φ 17× φ 22×17.5)	2		
9	L0806020	GIRDER BUSHING (φ 17× φ 10.2×55)	主梁衬套 (φ 17× φ 10.2×55)	1		
10	S0401412	WASHER (φ 10× φ 20×2)	平垫片 (φ 10× φ 20×2)	1		
11	S0303500	"E" RETAINER (φ 8)	E型挡圈 (φ 8)	1		
12	L0109010	ACCELERATOR PEDAL	油门踏板组件	1		
13	G0109050	PIN	油门活动销	1		
14	G0109060	EXTENSION SPRING	油门踏板回位弹簧	1		
15	S0101213	BOLT, FLANGE (M8×50)	六角法兰面螺栓 (M8×50)	1		
16	S0203004	NUT (M8)	六角自锁螺母 (M8)	1		
17	L0806010	BRACKET, BRAKE	制动固定板焊接组件	1		
18	S0109320	BOLT (M6×50)	沉头螺栓 (M6×50)	1		
19	L0904010	STEERING TRANSMISSION SHAFT	转向传动轴 (十字节)	1		
20	L0903010	STEERING COLUMN	方向柱管组件	1		
21	S0402003	SPRING WASHER (φ 8)	弹簧垫圈 (φ 8)	2		
22	S0102210	BOLT (M8×25)	外六角螺栓 (M8×25)	2		
23	L0902010	STEERING WHEEL	方向盘	1		
24	S0101056	BOLT, FLANGE (M6×16)	六角法兰面螺栓 (M6×16)	3		
25	S0202007	NUT (M6)	六角螺母 (M6)	1		

F15 扶手、保险杠、座椅 ARMREST、BUMPER、SEAT ASSEMBLY



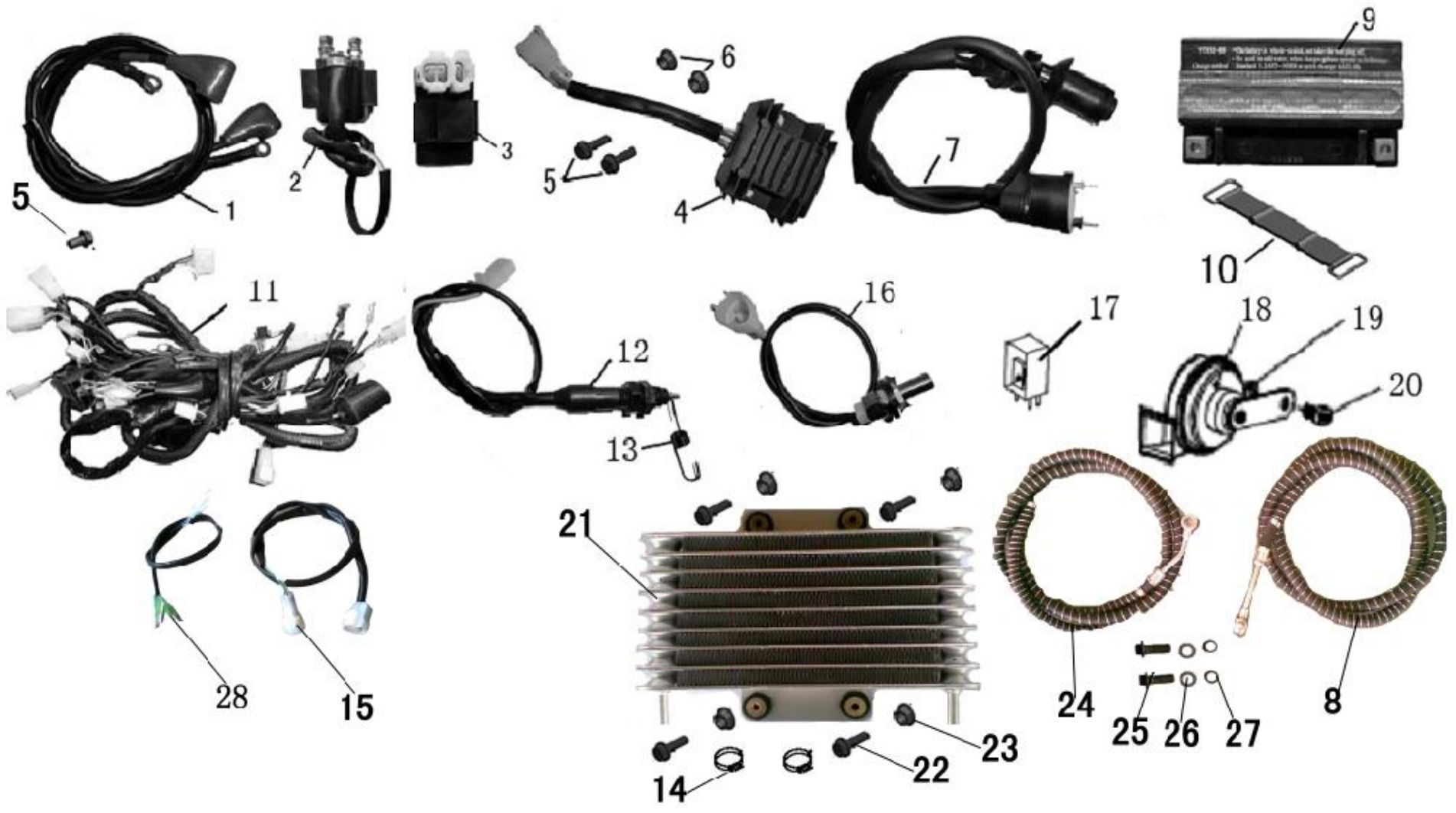
CODE	PART CODE	DESCRIPTION (EN)	DESCRIPTION (CN)	Q`TY	PRICE (\$)	REMARKS
1	L1110020	ARMREST FIXATION DISCRETENESS	扶手固定组件	1		
2	S0101206	BOLT, FLANGE (M8×16)	六角法兰面螺栓 (M8×16)	6		
3	L1110010	ARMREST DISCRETENESS	活动扶手组件	1		
4	L0902030	HANDLEBAR COVER	手把套(封口)	2		
5	L1110030	PIN(φ8×33)	销(φ8×33)	1		
6	S0601108	COTTER PIN(φ1.5×25)	开口销(φ1.5×25)	1		
7	L1212110	BRACKET, AFTER LOWER MAIN SEAT	座椅后固定管	1		
8	GB/T 70.1 M6×20	BOLT (M6×20)	内六角螺栓 (M6×20)	12		
9	S0101312	BOLT, FLANGE (M10×1.25×35)	六角法兰面螺栓 (M10×1.25×35)	2		
10	S0204005	NUT (M10×1.25)	六角锁紧螺母 (M10×1.25)	2		
11	L1203010	FRONT BUMPER	前保险杠组件	1		
12	S0204003	NUT (M8)	六角锁紧螺母 (M8)	8		
13	L1111011	SEAT BELT	安全带总成 (EEC)	2		
14	L1111030	BOLT, SEAT BELT	安全带螺栓	6		
15	L1212010	CUSHION	座椅坐垫	2		
16	L1212020	BACKREST	座椅靠背	2		
17	L1212030	BRACKER SEAT	座椅支架焊接组件	2		
18	S0101060	BOLT, FLANGE (M6×20)	六角法兰面螺栓 (M6×20)	12		
19	L1212070	MAIN SEAT SLIDE BLOCK	座椅主滑块	1		
20	L1212080	ASSISTANT SEAT SLIDE BLOCK	座椅副滑块	1		
21	L1212040	SEAT FASTNESS CROSSBAND	座椅固定横条焊接组件	2		
22						
23						
24						

F16 油箱 GASOLINE TANK



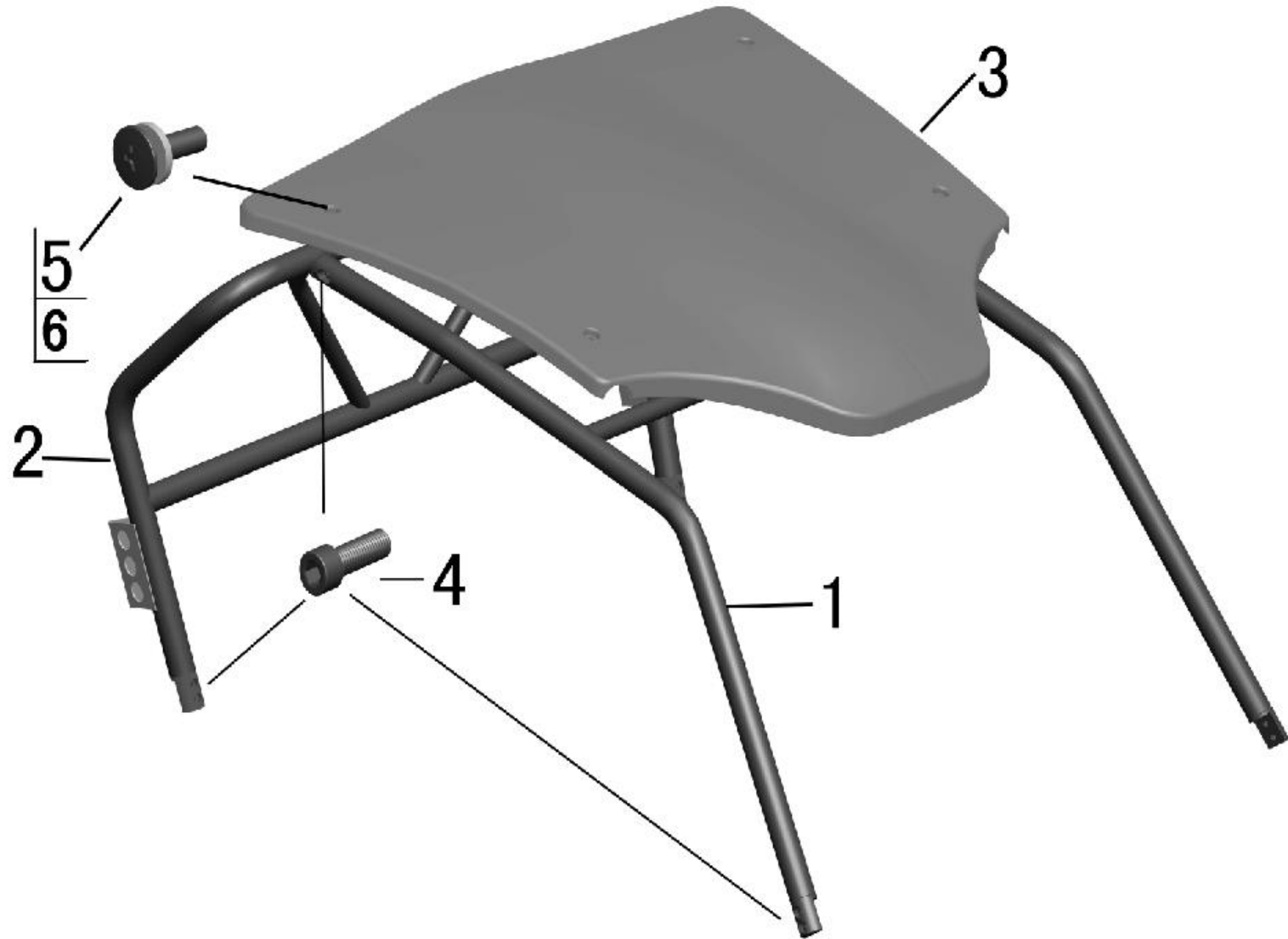
CODE	PART CODE	DESCRIPTION (EN)	DESCRIPTION (CN)	Q`TY	PRICE (\$)	REMARKS
1	L1209011	GASOLINE TANK	油箱组件	1		
2	L1209030	PIPE FUEL	吸油管组件	1		
3	A0107040	RUBBER WASHER	排气消声器缓冲弹簧垫片	3		
4	S0101208	BOLT, FLANGE (M8×25)	六角法兰面螺栓 (M8×25)	3		
5	S0203004	NUT, FLANGE (M8)	六角法兰面自锁螺母 (M8)	3		
6	H1209060	FUEL PUMP	负压汽油泵	1		
7	S0101057	BOLT, FLANGE (M6×20)	六角法兰面螺栓 (M6×20)	2		
8	G1209110	CAP ASSEMBLY. FUEL TANK	油箱盖	1		
9	H1209070	FUEL FILTER	汽油滤油器	1		
10	S0302110	CLAMP (Φ9)	卡箍 (Φ9)	3		
11	A1209030	FUEL HOSE	汽油管 (EPA)	2		200mm, 300mm
12	S0302112	CLAMP (Φ10)	卡箍 (Φ10)	3		
13	S0302132	CLAMP (Φ6)	卡箍 (Φ6)	1		
14	S0302004	CLAMP (Φ8)	卡箍 (Φ8)	1		
15	H1209040	FUEL HOSE (EPA)	汽油管 (EPA)	1		300mm
16	H1209050	HOSE, VACUUM PRESSURE	负压气管	1		300mm
17	L1209500	FUEL LEVEL SENSOR	油量传感器	1		
18	L1001050	CABLE, FUEL LEVEL SENSOR	油量传感器连接线	1		
19	GB/T 823 M5×12	BOLT (M5×12)	十字半圆头螺栓 (M5×12)	5		
20						
21						
22						
23						
24						

F17 电器件 ELECTRIC SYSTEM



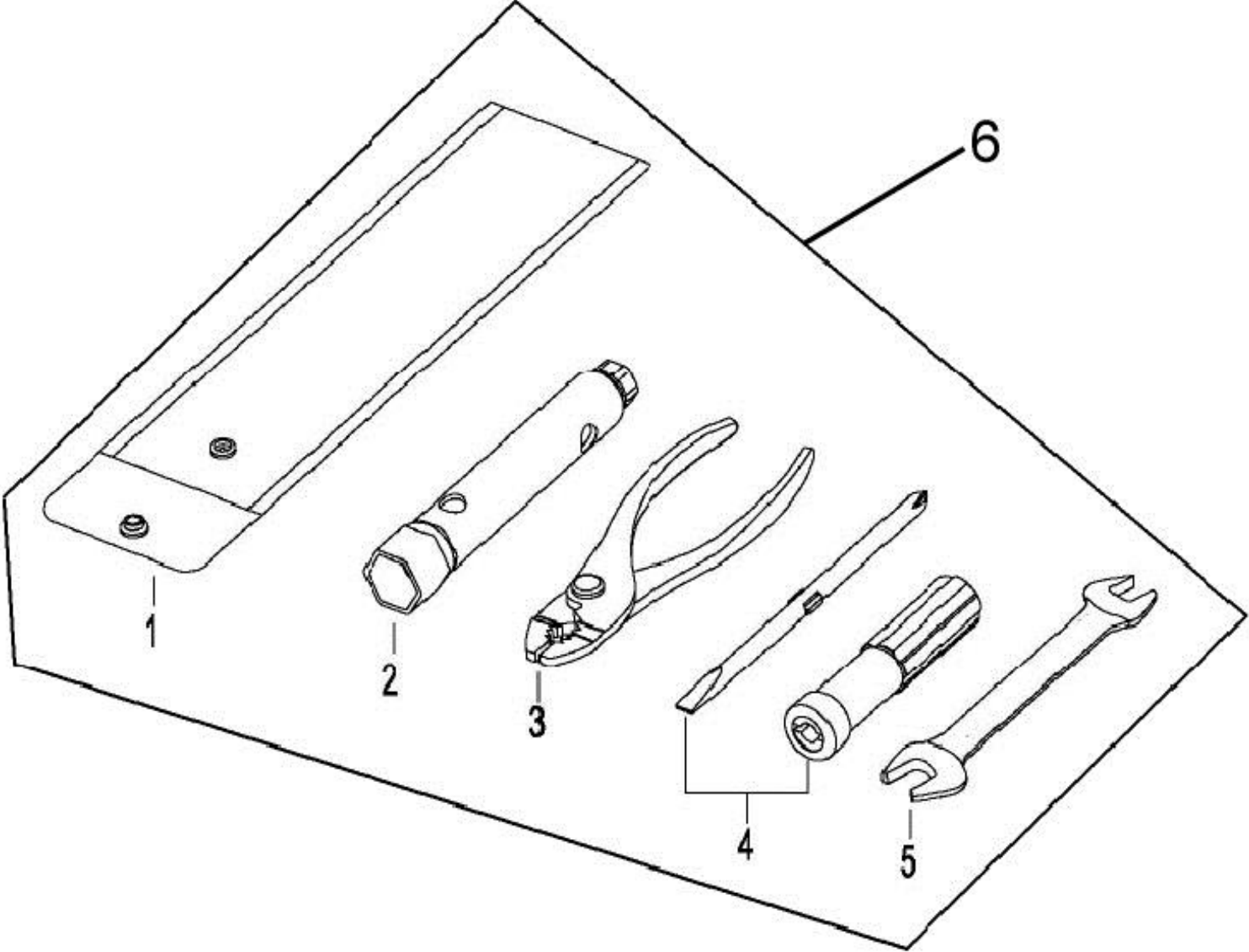
CODE	PART CODE	DESCRIPTION (EN)	DESCRIPTION (CN)	Q`TY	PRICE (\$)	REMARKS
1	L1001021	WIRE, MOTOR	启动马达线	1		
2	L1011010	START RELAY	起动继电器	1		
3	L1003010	CDI	点火器	1		
4	L1003030	RECTIFIER	整流器	1		
5	S0101057	BOLT, FLANGE (M6×20)	六角法兰面螺栓 (M6×16)	2		
6	S0203003	NUT (M6)	六角自锁螺母 (M6)	2		
7	L1003020	IGNITION COIL	高压包	1		
8	L0101507	FUEL HOSE (1800mm)	油管 (1800mm)	1		
9	L1002010	BATTERY	蓄电池	1		
10	H1002060	BANG, BATTERY	电池拉带	1		
11	L1001010	WIRE HARNESS	线束	1		
12	L1005050	HAND BRAKE SWITCH	手刹开关	2		
13	L1015060	HAND BRAKE SPRING	手刹拉簧	2		
14	S0301003	CLAMP (φ 13- φ 19)	抱箍 (φ 13- φ 19)	2		
15	L1001030	GEAR CONNECHTING LINE	档位连接线	1		
16	L1012010	SPEED SENSOR	车速传感器	1		
17	G1011100	FLASH APPARATUS	闪光器总成	1		
18	H1007010	HORN	电喇叭总成	1		
19	GB/T 6187.1 M8	BOLT (M8)	六角自锁螺母 (M8)	1		
20	GB/T 5789 M8×20	BOLT, FLANG (M8×20)	六角法兰面螺栓 (M8×20)	1		
21	L0101509	OIL COOLER COMP	油冷器	1		
22	GB/T 819.1 M6×16	SCREW (M6×16)	十字大扁头螺栓 (M6×16)	4		
23	GB/T 6177.1 M6	NUT (M6)	六角锁紧螺母 (M6)	4		
24	L0101508	FUEL HOSE (1850mm)	油管 (1850mm)	1		
25	L0101148	HOLLOW BOLT FOR FUEL	油冷器油管过油螺栓	2		
26	L0101149	OIL SEAL WASHER	封油垫圈	2		
27	L0101510	WASHER	组合垫片	2		
28	L1001040	WIRE, SPEED SENSOR	车速连接线	1		

F18 顶棚 PLATFOND



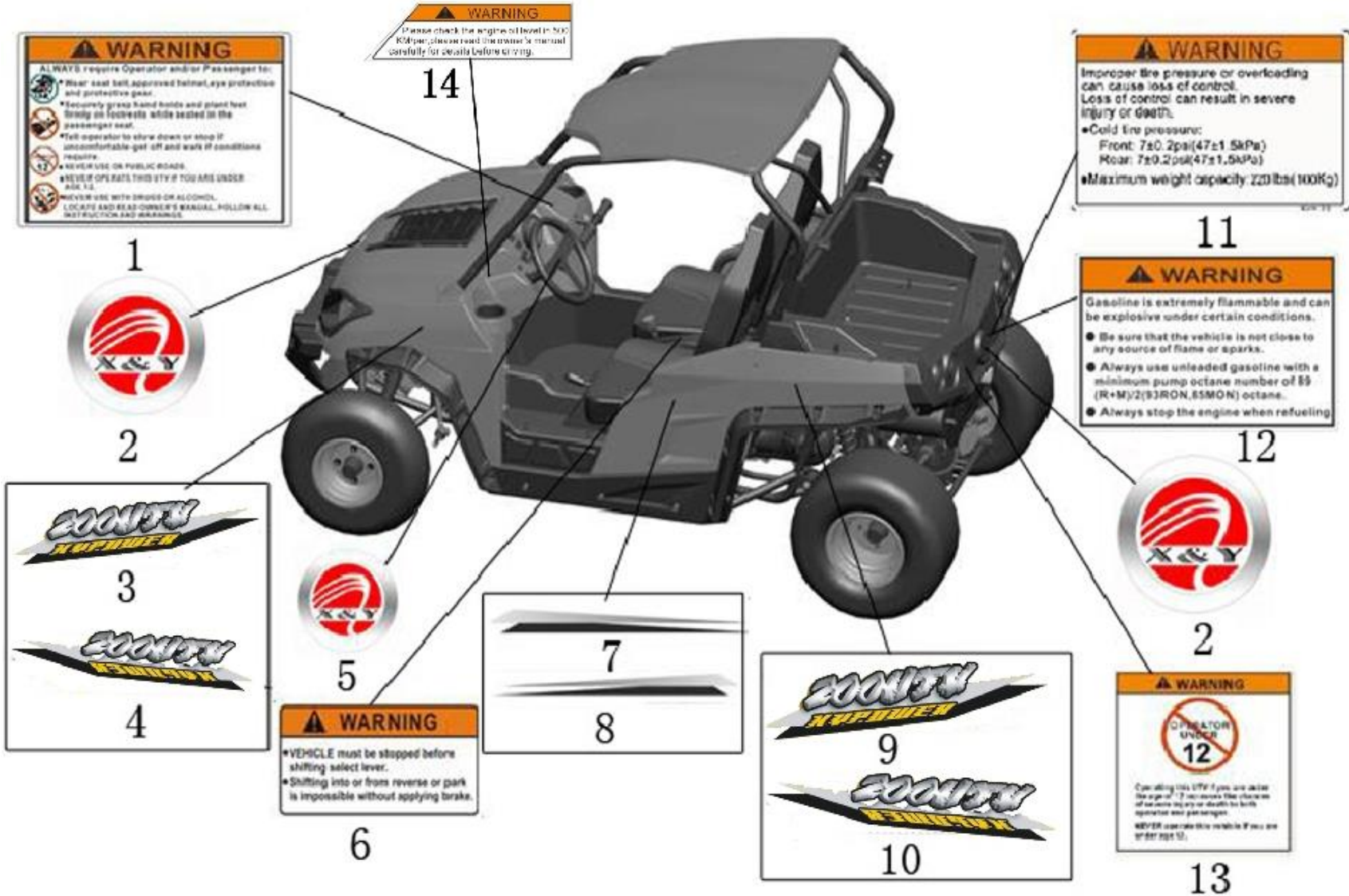
CODE	PART CODE	DESCRIPTION (EN)	DESCRIPTION (CN)	Q`TY	PRICE (\$)	REMARKS
1	L1202010	BRACKET, PLATFOND, FR	顶棚前支架组件	1		
2	L1202020	BRACKET, PLATFOND, RR	顶棚后支架组件	1		
3	G1106010	PLATFOND	顶棚	1		借用500GK
4	S0103210	BOLT (M8×25)	内六角螺栓 (M8×25)	10		
5	S0106111	BOLT (M6×30)	十字大扁头螺栓 (M6×30)	4		
6	S0404001	RUBBER WASHER (φ6)	橡胶垫 (φ6)	4		
7						
8						
9						
10						
11						
12						
13						
14						
15						
16						
17						
18						
19						
20						
21						
22						
23						
24						

F19 随车工具 TOOLS



CODE	PART CODE	DESCRIPTION (EN)	DESCRIPTION (CN)	Q`TY	PRICE (\$)	REMARKS
1	90101030	BAG, TOOL	随车工具袋	1		
2	U0700051	WRENCH, PLUG (S=16)	火花塞套筒 (S=16)	1		
3	U0800003	PLIERS	老虎钳	1		
4	U0800017	SCREWDRIVER	两用起子	1		
5	U0102003	SPANNER (8-10)	开口扳手 (8-10)	1		
6	L1407010	TOOLS ASSY	随车工具	1		
7						
8						
9						
10						
11						
12						
13						
14						
15						
16						
17						
18						
19						
20						
21						
22						
23						
24						

F20 标识、商标 LABELS、MARKS



CODE	PART CODE	DESCRIPTION (EN)	DESCRIPTION (CN)	Q`TY	PRICE (\$)	REMARKS
1	L1402060	LABEL, SAFETYMESSAGES	安全须知标贴	1		
2	H1402160	MARKS, HEAD COVER	标牌(XXXX)	2		
3	P1600006	LABEL, FRONT ENGINE COVER (L)	前机盖左侧标贴	1		
4	P1600005	LABEL, FRONT ENGINE COVER (R)	前机盖右侧标贴	1		
5	L0902020	MARKS, STEERING WHEEL	方向盘小标贴	1		方向盘内
6	A1402150	LABEL, GEARSHIFT	换挡警告贴花	1		
7	L1402090	NEAR SIDE LABEL	左侧标贴	1		
8	L1402100	STARBOARD LABEL	右侧标贴	1		
9	P1600003	LABEL, STORE BOX(L)	货斗左侧标贴	1		
10	P1600004	LABEL, STORE BOX(R)	货斗右侧标贴	1		
11	L1402070	LABEL, TYRE PRESSURE	轮胎气压标贴	1		
12	A1402220	PRTROL WARING STICKY	汽油警告标贴	1		
13	L1402080	LABEL, AGE RESTRICT	年龄限制标贴	1		
14	L1402510	LABEL, FILL UP ENGINE OIL	机油检查警告标贴	1		
15						
16						
17						
18						
19						
20						
21						
22						
23						
24						